

HIDALGO

## ---RED FEDERAL LIBRE---

1 Álamo - Huejutla de Reyes	MEX-127
2 Apizaco - Tejocotal	MEX-119
3 Ent. Colonia - Portezuelo	MEX-085
4 Ent. Jorobas - Tula	MEX-087
5 Libramiento de Huichapan	MEX-045
6 México - Pachuca (Libre)	MEX-085
7 Pachuca - Cd. Sahagún	MEX-105
8 Pachuca - Tempoal	MEX-105
9 Pachuca - Tüxpam	MEX-130
10 Portezuelo - Cd. Valles	MEX-085
11 Portezuelo - Palmillas	MEX-045
12 Tamazunchale - San Felipe Orizatlán	MEX-085
13 Venta de Carpio - T. C. (Pachuca - Tüxpam)	MEX-132

## ---RED FEDERAL DE CUOTA---

14 Ent. Tulancingo - Venta Grande (Cuota)	MEX-132D
15 Libramiento Norte de la Ciudad de México (Cuota)	MEX-055D
16 México - Pachuca (Cuota)	MEX-085D
17 Tejocotal - Nuevo Necaxa (Cuota)	MEX-132D

## ---RED FEDERAL INTEGRADA POR TRAMOS LIBRES Y DE CUOTA---

18 México - Querétaro (Cuota)	MEX-057-MEX-057D
-------------------------------	------------------

## ---RED ESTATAL LIBRE---

19 Actopan - Progreso	HGO
20 Cd. Sahagún - Ent. Emiliano Zapata	HGO
21 El Saucillo - Amealco	HGO-103
22 Ent. Tepeji del Río - Tlahuelilpan	HGO-017
23 Ent. Tolman - Cd. Sahagún	EM-009-HGO
24 Francisco I. Madero - Tula de Allende	HGO
25 Huichapan - Tecozautla	HGO-030
26 Jilotepec - Maravillas	EM-HGO
27 Libramiento de Atotonilco El Grande	HGO
28 Lolotla - Atlapexco	HGO
29 Los Reyes - El Tephé	EM-HGO
30 Otumba - Tizayuca	EM-HGO
31 Ramal a El Chico	HGO
32 Ramal a Pachuca	HGO
33 San Alejo - Huayacocotla	HGO-051-VER-113
34 San Felipe Orizatlán - Huejutla de Reyes	HGO
35 Santo Domingo - T. C. (México - Querétaro)	EM-011-HGO
36 T. C. (Los Reyes - El Tephé) - Tizayuca	EM-HGO
37 Tepeji del Río - T.C. (México - Querétaro)	HGO
38 Tlahuelilpan - San Agustín Tlaxiaca	HGO

## ---RED ESTATAL DE CUOTA---

39 Tlaxco - Tejocotal (Cuota)	PUE-TLAX-HGO-D
-------------------------------	----------------

## ---CARRETERAS INTEGRADAS POR TRAMOS FEDERALES Y ESTATALES---

40 Calpulalpan - El Ocote	MEX-HGO
---------------------------	---------





HIDALGO

1 CARR: Álamo - Huejutla de Reyes

CLAVE: 00116

RUTA: MEX-127

AÑO: 2025

LUGAR	ESTACION				CLASIFICACION VEHICULAR EN PORCIENTO													COORDENADAS		
	KM	TE	SC	TDPA	M	A	B	C2	C3	T3S2	T3S3	T3S2R4	OTROS	A	B	C	K'	D	LATITUD	LONGITUD
T. C. Tihuatlán - Potrero del Llano	0.00	3	0	4318	18.1	74.3	1.0	2.5	1.9	1.3	0.7	0.1	0.1	92.4	1.0	6.6	0.079	0.509	20.941913	-97.705623
Benito Juárez	73.00	1	0	2044	5.6	85.6	1.5	3.9	1.3	1.4	0.4	0.2	0.1	91.2	1.5	7.3	0.090	0.533	20.882093	-98.198268
T. Der. Chicontepec de Tejada	78.00	3	0	1238	9.2	79.5	0.5	7.0	1.3	1.4	0.5	0.6	0.0	88.7	0.5	10.8	0.107	0.541	20.923649	-98.221502
Lim. Edos. Term. Ver. Ppia. Hgo.	78.70																			
T. C. Pachuca - Tempoal (Huejutla de Reyes)	110.00																			

2 CARR: Apizaco - Tejocotal

CLAVE: 00430

RUTA: MEX-119

AÑO: 2025

LUGAR	ESTACION				CLASIFICACION VEHICULAR EN PORCIENTO													COORDENADAS		
	KM	TE	SC	TDPA	M	A	B	C2	C3	T3S2	T3S3	T3S2R4	OTROS	A	B	C	K'	D	LATITUD	LONGITUD
Apizaco	0.00	3	1	12649	4.3	85.6	1.5	4.3	1.2	2.0	0.4	0.6	0.1	89.9	1.5	8.6	0.087	0.547	19.437518	-98.131326
Apizaco	0.00	3	2	12557	4.2	85.4	1.7	4.2	1.2	2.0	0.6	0.6	0.1	89.6	1.7	8.7	0.086	0.547	19.437540	-98.131383
T. Der. Tetla	6.60	3	0	24135	0.7	85.9	1.7	5.2	1.7	2.4	1.5	0.5	0.4	86.6	1.7	11.7	0.074	0.546	19.471654	-98.112275
T. Izq. Atlangatepec	12.15	1	0	18216	1.7	84.1	2.1	4.9	1.9	2.5	1.6	0.8	0.4	85.8	2.1	12.1	0.075	0.542	19.505704	-98.116995
Tlaxco	23.91	1	1	5809	4.4	87.1	1.1	3.7	0.9	1.9	0.5	0.3	0.1	91.5	1.1	7.4	0.082	0.515	19.598468	-98.125531
Tlaxco	23.91	1	2	5953	4.5	86.5	1.2	3.7	1.0	1.9	0.7	0.4	0.1	91.0	1.2	7.8	0.081	0.515	19.598495	-98.125636
Tlaxco	23.91	3	0	6553	3.4	85.6	1.2	4.0	1.8	2.4	0.8	0.5	0.3	89.0	1.2	9.8	0.091	0.579	19.626322	-98.124798
Lim. Edos. Term. Tlax. Ppia. Pue.	34.45																			
T. Der. Tetela de Ocampo	52.20	1	0	9875	6.9	82.8	1.1	5.7	1.2	0.9	1.1	0.2	0.1	89.7	1.1	9.2	0.085	0.630	19.800530	-98.026733
Zacatlán	71.25	1	0	15392	7.2	84.9	1.3	3.7	1.2	0.9	0.3	0.4	0.1	92.1	1.3	6.6	0.082	0.551	19.918424	-97.959183
Lim. Edos. Term. Pue. Ppia. Hgo.	110.45																			
T. C. Pachuca - Tuxpam	113.15	1	0	10702	4.0	77.2	2.3	8.0	2.9	1.5	0.9	2.6	0.6	81.2	2.3	16.5	0.074	0.504	20.123908	-98.128603

3 CARR: Ent. Colonia - Portezuelo

CLAVE: 13257

RUTA: MEX-085

AÑO: 2025

LUGAR	ESTACION				CLASIFICACION VEHICULAR EN PORCIENTO													COORDENADAS		
	KM	TE	SC	TDPA	M	A	B	C2	C3	T3S2	T3S3	T3S2R4	OTROS	A	B	C	K'	D	LATITUD	LONGITUD
Ent. Colonia	0.00	3	1	32785	1.6	90.4	1.2	2.7	1.5	1.1	0.7	0.6	0.2	92.0	1.2	6.8	0.095	0.504	20.061261	-98.787083
Ent. Colonia	0.00	3	2	33358	1.7	90.0	1.3	2.6	1.4	1.2	0.9	0.7	0.2	91.7	1.3	7.0	0.079	0.504	20.061179	-98.787237
T. Der. Pachuca	8.34	3	1	22906	1.9	89.7	1.4	3.1	1.5	1.3	0.5	0.4	0.2	91.6	1.4	7.0	0.077	0.503	20.123006	-98.832303
T. Der. Pachuca	8.34	3	2	23183	1.8	89.4	1.5	3.2	1.6	1.2	0.6	0.5	0.2	91.2	1.5	7.3	0.103	0.503	20.127313	-98.837227
T. Izq. San Agustín Tlaxiaca	15.36	3	1	14613	2.1	87.8	2.2	3.2	1.9	1.3	0.8	0.5	0.2	89.9	2.2	7.9	0.092	0.518	20.142262	-98.891920
T. Izq. San Agustín Tlaxiaca	15.36	3	2	13610	2.1	86.9	2.3	3.3	2.0	1.5	0.9	0.7	0.3	89.0	2.3	8.7	0.083	0.518	20.141649	-98.892015
Actopan	34.13	1	1	17077	2.4	88.5	2.0	3.6	1.0	1.4	0.7	0.3	0.1	90.9	2.0	7.1	0.084	0.502	20.249939	-98.932551
Actopan	34.13	1	2	17199	2.1	88.5	1.8	3.9	1.2	1.5	0.6	0.3	0.1	90.6	1.8	7.6	0.107	0.502	20.249881	-98.932639

HIDALGO

3 CARR: Ent. Colonia - Portezuelo

CLAVE: 13257

RUTA: MEX-085

AÑO: 2025

LUGAR	ESTACION				CLASIFICACION VEHICULAR EN PORCIENTO										COORDENADAS					
	KM	TE	SC	TDPA	M	A	B	C2	C3	T3S2	T3S3	T3S2R4	OTROS	A	B	C	K'	D	LATITUD	LONGITUD
Actopan	34.13	3	1	10071	3.8	85.4	2.3	3.9	1.3	1.9	1.0	0.3	0.1	89.2	2.3	8.5	0.075	0.504	20.287752	-98.972035
Actopan	34.13	3	2	9927	3.6	86.5	2.1	3.7	1.2	1.7	0.9	0.2	0.1	90.1	2.1	7.8	0.082	0.504	20.290472	-98.975873
T. Izq. Tula	68.20	1	1	8308	4.8	84.9	2.7	2.7	1.4	2.0	1.0	0.3	0.2	89.7	2.7	7.6	0.112	0.512	20.439187	-99.163131
T. Izq. Tula	68.20	1	2	7906	5.2	84.3	2.4	2.5	1.6	2.2	1.2	0.4	0.2	89.5	2.4	8.1	0.100	0.512	20.439123	-99.163232
Ixmiquilpan	75.20	1	1	14052	7.5	85.8	1.3	1.8	1.1	1.2	0.6	0.6	0.1	93.3	1.3	5.4	0.076	0.526	20.463574	-99.195220
Ixmiquilpan	75.20	1	2	15591	7.7	85.6	1.3	2.0	1.1	1.2	0.6	0.4	0.1	93.3	1.3	5.4	0.072	0.526	20.463470	-99.195249
Ixmiquilpan	75.20	3	1	8829	9.8	81.1	1.6	3.0	1.3	1.5	1.0	0.6	0.1	90.9	1.6	7.5	0.074	0.505	20.479541	-99.248640
Ixmiquilpan	75.20	3	2	9014	9.5	82.1	1.4	2.9	1.1	1.6	0.9	0.4	0.1	91.6	1.4	7.0	0.079	0.505	20.479449	-99.248678
Portezuelo	82.00																			

4 CARR: Ent. Jorobas - Tula

CLAVE: 00159

RUTA: MEX-087

AÑO: 2025

LUGAR	ESTACION				CLASIFICACION VEHICULAR EN PORCIENTO										COORDENADAS					
	KM	TE	SC	TDPA	M	A	B	C2	C3	T3S2	T3S3	T3S2R4	OTROS	A	B	C	K'	D	LATITUD	LONGITUD
T. C. México - Querétaro (Cuota)	0.00	3	1	17866	3.6	81.6	2.3	4.9	1.9	3.2	1.4	0.9	0.2	85.2	2.3	12.5	0.091	0.506	19.834494	-99.243494
T. C. México - Querétaro (Cuota)	0.00	3	2	18319	3.4	81.6	2.1	5.1	2.3	3.0	1.3	1.0	0.2	85.0	2.1	12.9	0.070	0.506	19.834552	-99.243596
Lim. Edos. Term. Méx. Ppia. Hgo.	5.90																			
T. Der. Atotonilco	21.50	1	1	10139	2.2	81.2	2.1	5.6	2.4	4.0	1.5	0.8	0.2	83.4	2.1	14.5	0.090	0.519	20.015736	-99.247438
T. Der. Atotonilco	21.50	1	2	9404	2.0	80.2	2.3	5.8	2.6	4.2	1.8	0.9	0.2	82.2	2.3	15.5	0.084	0.519	20.015058	-99.247470
Tula de Allende	37.70	1	1	18034	3.9	82.2	2.1	5.9	1.5	1.9	1.3	0.8	0.4	86.1	2.1	11.8	0.102	0.502	20.061381	-99.280083
Tula de Allende	37.70	1	2	18164	4.2	82.1	2.0	5.7	1.4	2.0	1.4	0.8	0.4	86.3	2.0	11.7	0.086	0.502	20.061276	-99.280075

5 CARR: Libramiento de Huichapan

CLAVE:

RUTA: MEX-045

AÑO: 2025

LUGAR	ESTACION				CLASIFICACION VEHICULAR EN PORCIENTO										COORDENADAS					
	KM	TE	SC	TDPA	M	A	B	C2	C3	T3S2	T3S3	T3S2R4	OTROS	A	B	C	K'	D	LATITUD	LONGITUD
T. C. Portezuelo - Palmillas Oeste	0.00																			
T. C. Huichapan - Tecozautla	2.00	1	1	6126	2.8	81.2	1.5	2.3	1.8	3.6	1.9	4.1	0.8	84.0	1.5	14.5	0.080	0.508	20.383346	-99.657309
T. C. Huichapan - Tecozautla	2.00	1	2	6322	2.9	81.2	1.4	2.3	1.8	3.5	1.7	4.3	0.9	84.1	1.4	14.5	0.092	0.508	20.383512	-99.656989
T. C. Portezuelo - Palmillas Oeste	9.00	1	1	4679	2.5	77.6	2.3	3.3	2.5	6.2	3.1	1.9	0.6	80.1	2.3	17.6	0.114	0.504	20.336245	-99.692419
T. C. Portezuelo - Palmillas Oeste	9.00	1	2	4609	2.3	78.2	2.3	3.6	2.5	6.0	2.8	1.9	0.4	80.5	2.3	17.2	0.091	0.504	20.335799	-99.692539

HIDALGO

6 CARR: México - Pachuca (Libre)

CLAVE: 00431

RUTA: MEX-085

AÑO: 2025

LUGAR	ESTACION				CLASIFICACION VEHICULAR EN PORCIENTO													COORDENADAS		
	KM	TE	SC	TDPA	M	A	B	C2	C3	T3S2	T3S3	T3S2R4	OTROS	A	B	C	K'	D	LATITUD	LONGITUD
México	0.00																			
Lim. Edos. Term. CDMX Ppia. Méx.	9.89																			
T. Der. Pirámides	26.93	1	1	15084	5.2	84.5	0.6	4.5	0.5	2.3	1.6	0.5	0.3	89.7	0.6	9.7	0.076	0.510	19.618919	-99.008068
T. Der. Pirámides	26.93	1	2	15689	4.9	85.1	0.5	4.7	0.4	2.2	1.5	0.4	0.3	90.0	0.5	9.5	0.061	0.510	19.619029	-99.008127
Venta de Carpio	27.00	3	1	27637	4.2	87.4	0.4	4.4	0.9	1.3	1.1	0.1	0.2	91.6	0.4	8.0	0.062	0.508	19.625721	-99.003003
Venta de Carpio	27.00	3	2	26768	4.1	87.4	0.6	4.6	0.8	1.2	1.0	0.1	0.2	91.5	0.6	7.9	0.057	0.508	19.625765	-99.003195
T. Der. Aut. México - Pachuca (Cuota)	37.52	1	1	28930	5.3	88.9	0.5	3.2	0.9	0.6	0.3	0.2	0.1	94.2	0.5	5.3	0.076	0.503	19.704466	-98.978286
T. Der. Aut. México - Pachuca (Cuota)	37.52	1	2	29292	5.2	89.6	0.4	3.0	0.7	0.5	0.3	0.2	0.1	94.8	0.4	4.8	0.076	0.503	19.703815	-98.978702
Acceso al AIFA por San Jerónimo	42.00	1	1	19369	6.3	86.5	1.4	4.8	0.4	0.4	0.1	0.1	0.0	92.8	1.4	5.8	0.074	0.510	19.739442	-98.972054
Acceso al AIFA por San Jerónimo	42.00	1	2	20173	6.4	86.3	1.3	4.7	0.5	0.5	0.1	0.2	0.0	92.7	1.3	6.0	0.086	0.510	19.739445	-98.972140
Acceso al AIFA por San Jerónimo	42.00	3	1	20539	6.7	86.5	0.6	4.3	0.7	0.9	0.1	0.2	0.0	93.2	0.6	6.2	0.101	0.508	19.748938	-98.972534
Acceso al AIFA por San Jerónimo	42.00	3	2	21229	6.8	86.4	0.7	4.2	0.9	0.8	0.1	0.1	0.0	93.2	0.7	6.1	0.092	0.508	19.750841	-98.972903
T. C. Via Perimentral AIFA	42.70	3	1	20451	6.7	86.8	0.5	4.2	0.9	0.7	0.1	0.1	0.0	93.5	0.5	6.0	0.075	0.514	19.756378	-98.973389
T. C. Via Perimentral AIFA	42.70	3	2	21591	6.8	86.7	0.4	4.3	0.8	0.8	0.1	0.1	0.0	93.5	0.4	6.1	0.078	0.514	19.756429	-98.973484
T. Izq. Zumpango	44.68	1	1	18157	4.7	86.6	1.9	4.1	0.9	0.8	0.3	0.3	0.4	91.3	1.9	6.8	0.068	0.519	19.760489	-98.973576
T. Izq. Zumpango	44.68	1	2	19552	4.8	86.7	2.0	4.0	0.8	0.7	0.3	0.4	0.3	91.5	2.0	6.5	0.075	0.519	19.759582	-98.973704
T. Izq. Zumpango	44.68	3	1	13184	8.6	79.8	1.1	5.8	1.7	1.6	0.3	0.8	0.3	88.4	1.1	10.5	0.070	0.503	19.772735	-98.973077
T. Izq. Zumpango	44.68	3	2	13051	8.7	80.0	1.2	5.7	1.6	1.6	0.3	0.7	0.2	88.7	1.2	10.1	0.072	0.503	19.772742	-98.973137
Lim. Edos. Term. Méx. Ppia. Hgo.	49.30																			
Tizayuca	52.50	1	1	11609	10.0	79.5	1.2	5.9	1.6	1.1	0.3	0.3	0.1	89.5	1.2	9.3	0.079	0.537	19.817704	-98.975943
Tizayuca	52.50	1	2	13462	9.9	79.3	1.5	6.3	1.2	1.1	0.3	0.2	0.2	89.2	1.5	9.3	0.079	0.537	19.818073	-98.976125
Tizayuca	52.50	3	1	19439	3.6	88.0	1.2	4.7	0.9	0.7	0.4	0.3	0.2	91.6	1.2	7.2	0.082	0.509	19.858304	-98.968200
Tizayuca	52.50	3	2	20152	3.7	88.0	1.1	4.6	1.0	0.6	0.3	0.4	0.3	91.7	1.1	7.2	0.071	0.509	19.858044	-98.968585
T. C. México - Tizayuca (Cuota)	61.00	1	1	7610	8.3	80.0	2.6	6.2	1.3	0.8	0.4	0.3	0.1	88.3	2.6	9.1	0.076	0.501	19.878595	-98.947875
T. C. México - Tizayuca (Cuota)	61.00	1	2	7633	8.5	79.2	2.5	6.2	1.6	0.7	0.5	0.5	0.3	87.7	2.5	9.8	0.080	0.501	19.883990	-98.942441
T. C. México - Tizayuca (Cuota)	61.00	3	1	25496	0.8	86.6	2.6	5.7	1.7	1.6	0.5	0.3	0.2	87.4	2.6	10.0	0.085	0.513	19.898281	-98.928396
T. C. México - Tizayuca (Cuota)	61.00	3	2	28552	0.6	86.7	2.9	5.6	1.6	1.4	0.6	0.4	0.2	87.3	2.9	9.8	0.087	0.513	19.900970	-98.926127
X. C. Arco Norte de La Ciudad de México	64.20	1	1	32497	0.6	87.1	3.0	5.1	1.3	1.9	0.5	0.4	0.1	87.7	3.0	9.3	0.086	0.501	19.923095	-98.900657
X. C. Arco Norte de La Ciudad de México	64.20	1	2	32320	0.5	87.8	2.9	5.0	1.2	1.8	0.4	0.3	0.1	88.3	2.9	8.8	0.105	0.501	19.923286	-98.900832
X. C. Arco Norte de La Ciudad de México	64.20	3	1	37035	1.2	84.5	3.9	6.0	1.1	2.0	0.7	0.4	0.2	85.7	3.9	10.4	0.074	0.515	19.930857	-98.890884
X. C. Arco Norte de La Ciudad de México	64.20	3	2	34670	1.3	84.9	3.8	6.1	1.0	1.9	0.6	0.3	0.1	86.2	3.8	10.0	0.098	0.515	19.929262	-98.893523
Ent. Colonia	83.97	1	1	65850	0.9	89.9	2.7	3.9	0.4	0.8	0.4	0.8	0.2	90.8	2.7	6.5	0.098	0.512	20.043750	-98.792840
Ent. Colonia	83.97	1	2	62098	0.8	89.9	2.8	3.7	0.6	0.7	0.5	0.8	0.2	90.7	2.8	6.5	0.075	0.512	20.044143	-98.792993
X. C. Libramiento de Pachuca	86.50	1	1	54809	4.0	88.5	3.4	1.6	0.8	0.5	0.7	0.3	0.2	92.5	3.4	4.1	0.071	0.505	20.097799	-98.765979
X. C. Libramiento de Pachuca	86.50	1	2	53456	3.9	88.7	3.3	1.7	0.7	0.5	0.6	0.4	0.2	92.6	3.3	4.1	0.078	0.505	20.098034	-98.766129

HIDALGO

6 CARR: México - Pachuca (Libre)

CLAVE: 00431

RUTA: MEX-085

AÑO: 2025

LUGAR	ESTACION	CLASIFICACION VEHICULAR EN PORCIENTO														COORDENADAS						
		KM	TE	SC	TDPA	M	A	B	C2	C3	T3S2	T3S3	T3S2R4	OTROS	A	B	C	K'	D	LATITUD	LONGITUD	
Pachuca	94.00																					

7 CARR: Pachuca - Cd. Sahagún

CLAVE: 13088

RUTA: MEX-105

AÑO: 2025

LUGAR	ESTACION	CLASIFICACION VEHICULAR EN PORCIENTO														COORDENADAS					
		KM	TE	SC	TDPA	M	A	B	C2	C3	T3S2	T3S3	T3S2R4	OTROS	A	B	C	K'	D	LATITUD	LONGITUD
Pachuca	0.00	3	1	35447	5.0	89.7	0.7	1.8	1.1	0.9	0.2	0.5	0.1	94.7	0.7	4.6	0.075	0.503	20.067843	-98.744439	
Pachuca	0.00	3	2	35004	5.5	88.9	0.8	1.8	1.2	1.0	0.3	0.4	0.1	94.4	0.8	4.8	0.081	0.503	20.067845	-98.744283	
T. Der. Palma Gorda	11.00	1	1	38424	3.9	91.2	0.8	1.7	0.9	0.8	0.3	0.3	0.1	95.1	0.8	4.1	0.084	0.507	20.050732	-98.738986	
T. Der. Palma Gorda	11.00	1	2	39663	3.8	91.3	0.8	1.8	0.9	0.8	0.3	0.2	0.1	95.1	0.8	4.1	0.099	0.507	20.049924	-98.738411	
X. C. Venta de Carpio - Tulancingo	29.40	1	1	10846	1.5	85.3	1.9	5.3	1.9	2.2	1.4	0.4	0.1	86.8	1.9	11.3	0.086	0.500	19.896982	-98.671091	
X. C. Venta de Carpio - Tulancingo	29.40	1	2	10827	1.8	85.9	1.5	5.5	1.6	2.2	1.2	0.2	0.1	87.7	1.5	10.8	0.085	0.500	19.897015	-98.670946	
X. C. Venta de Carpio - Tulancingo	29.40	3	1	8095	1.8	88.3	1.3	5.0	1.2	1.5	0.6	0.3	0.0	90.1	1.3	8.6	0.092	0.532	19.871000	-98.661424	
X. C. Venta de Carpio - Tulancingo	29.40	3	2	9215	1.3	88.3	1.4	5.3	1.2	1.6	0.6	0.3	0.0	89.6	1.4	9.0	0.083	0.532	19.870945	-98.661311	
T. Izq. Tepeapulco	40.00	1	1	7990	1.1	88.7	1.3	4.9	0.9	1.7	0.4	0.8	0.2	89.8	1.3	8.9	0.101	0.509	19.829835	-98.604069	
T. Izq. Tepeapulco	40.00	1	2	7702	1.5	88.0	1.3	5.0	0.9	1.9	0.4	0.8	0.2	89.5	1.3	9.2	0.085	0.509	19.829927	-98.604017	
T. Izq. Tepeapulco	40.00	3	1	7294	1.3	87.3	1.7	5.1	1.0	2.2	0.7	0.6	0.1	88.6	1.7	9.7	0.104	0.502	19.809833	-98.584068	
T. Izq. Tepeapulco	40.00	3	2	7248	1.4	86.8	1.8	5.1	1.1	2.3	0.7	0.7	0.1	88.2	1.8	10.0	0.095	0.502	19.808859	-98.583718	
Cd. Sahagún	44.70																				

8 CARR: Pachuca - Tempoal

CLAVE: 00113

RUTA: MEX-105

AÑO: 2025

LUGAR	ESTACION	CLASIFICACION VEHICULAR EN PORCIENTO														COORDENADAS					
		KM	TE	SC	TDPA	M	A	B	C2	C3	T3S2	T3S3	T3S2R4	OTROS	A	B	C	K'	D	LATITUD	LONGITUD
Pachuca	0.00	3	0	4018	4.2	93.1	0.6	1.9	0.2	0.0	0.0	0.0	0.0	97.3	0.6	2.1	0.133	0.507	20.130697	-98.714465	
T. Der. Omittán de Juárez (1º Acceso)	18.20	1	0	12893	2.2	86.9	1.6	5.0	1.7	1.1	0.4	0.7	0.4	89.1	1.6	9.3	0.094	0.510	20.160760	-98.654287	
T. Der a Huasca	22.20																				
T. Libramiento de Atotonilco El Grande	30.25																				
Atotonilco El Grande	33.85	3	1	5145	3.3	89.0	1.2	4.0	0.9	0.7	0.6	0.1	0.2	92.3	1.2	6.5	0.079	0.505	20.302759	-98.681759	
Atotonilco El Grande	33.85	3	2	5240	3.7	87.9	1.3	4.4	1.0	0.8	0.5	0.1	0.3	91.6	1.3	7.1	0.087	0.505	20.302458	-98.681734	
T. Libramiento de Atotonilco El Grande	35.45																				
Cerro Colorado	48.15																				
T. Izq. Metztlán	63.70	1	0	6126	1.7	85.5	2.2	6.3	1.5	1.3	1.1	0.3	0.1	87.2	2.2	10.6	0.079	0.510	20.467517	-98.676754	
T. Izq. Metztlán	63.70	3	0	4550	2.4	82.3	2.7	7.4	1.5	1.8	0.7	0.9	0.3	84.7	2.7	12.6	0.076	0.520	20.474979	-98.668530	
Metzquitlán	75.00	1	0	6134	2.6	85.6	1.9	6.1	1.3	1.2	1.0	0.2	0.1	88.2	1.9	9.9	0.071	0.515	20.527381	-98.647017	

HIDALGO

8 CARR: Pachuca - Tempoal

CLAVE: 00113

RUTA: MEX-105

AÑO: 2025

LUGAR	ESTACION				CLASIFICACION VEHICULAR EN PORCIENTO													COORDENADAS		
	KM	TE	SC	TDPA	M	A	B	C2	C3	T3S2	T3S3	T3S2R4	OTROS	A	B	C	K'	D	LATITUD	LONGITUD
T. Izq. Zacualtipán	96.50	1	1	5294	3.3	91.5	0.9	2.1	0.9	0.5	0.6	0.1	0.1	94.8	0.9	4.3	0.072	0.537	20.642201	-98.636412
T. Izq. Zacualtipán	96.50	1	2	4572	3.7	89.6	1.2	2.3	1.6	0.9	0.4	0.2	0.1	93.3	1.2	5.5	0.083	0.537	20.642132	-98.636459
T. Izq. Zacualtipán	96.50	3	0	5162	4.4	83.9	2.1	6.1	0.9	0.7	1.1	0.6	0.2	88.3	2.1	9.6	0.086	0.514	20.664046	-98.673993
X. C. Molango - Xochicoatlán	129.80	1	0	3306	4.9	86.5	2.0	2.3	1.6	1.5	0.5	0.6	0.1	91.4	2.0	6.6	0.085	0.514	20.787120	-98.721226
X. C. Molango - Xochicoatlán	129.80	3	0	3811	5.8	87.6	2.1	2.2	0.8	0.8	0.4	0.2	0.1	93.4	2.1	4.5	0.080	0.512	20.794891	-98.726840
T. Izq. Tepehuacán de Guerrero	157.70	1	0	2847	3.2	80.3	2.8	6.5	2.6	3.5	0.5	0.5	0.1	83.5	2.8	13.7	0.069	0.521	20.965006	-98.686673
Tehuacán	199.20	1	0	2296	3.5	81.8	3.3	5.3	0.9	3.1	1.7	0.4	0.0	85.3	3.3	11.4	0.080	0.506	21.057424	-98.509950
T. Izq. Huejutla (1° Acceso)	214.60	1	1	6262	7.6	82.4	1.6	2.5	0.9	3.3	1.3	0.4	0.0	90.0	1.6	8.4	0.086	0.528	21.121269	-98.419573
T. Izq. Huejutla (1° Acceso)	214.60	1	2	7012	8.3	81.2	1.5	2.3	1.0	3.8	1.3	0.6	0.0	89.5	1.5	9.0	0.092	0.528	21.121296	-98.419638
T. Izq. Huejutla (1° Acceso)	214.60	3	1	8881	3.2	91.9	0.9	1.4	0.8	0.6	0.3	0.7	0.2	95.1	0.9	4.0	0.079	0.505	21.135145	-98.409356
T. Izq. Huejutla (1° Acceso)	214.60	3	2	9075	2.8	92.5	0.9	1.5	0.6	0.6	0.2	0.7	0.2	95.3	0.9	3.8	0.075	0.505	21.135157	-98.409437
Lim. Edos. Term. Hgo. Ppia. Ver.	217.20																			
T. C. Alazán - Canoas	260.68	1	0	2753	8.4	70.9	2.0	10.5	2.6	2.3	1.9	1.3	0.1	79.3	2.0	18.7	0.090	0.524	21.491694	-98.357711

9 CARR: Pachuca - Tuxpam

CLAVE: 00608

RUTA: MEX-130

AÑO: 2025

LUGAR	ESTACION				CLASIFICACION VEHICULAR EN PORCIENTO													COORDENADAS		
	KM	TE	SC	TDPA	M	A	B	C2	C3	T3S2	T3S3	T3S2R4	OTROS	A	B	C	K'	D	LATITUD	LONGITUD
Pachuca	0.00																			
X. C. Libramiento de Pachuca	2.60	3	1	33336	6.4	89.5	0.3	2.3	0.6	0.4	0.2	0.2	0.1	95.9	0.3	3.8	0.075	0.518	20.086797	-98.713339
X. C. Libramiento de Pachuca	2.60	3	2	30841	6.4	89.4	0.3	2.4	0.6	0.4	0.2	0.2	0.1	95.8	0.3	3.9	0.081	0.518	20.086837	-98.713177
T. Izq. Pachuquilla (1° Acceso)	7.00	1	1	24199	3.7	88.6	0.7	4.2	1.3	0.6	0.3	0.3	0.3	92.3	0.7	7.0	0.072	0.505	20.077723	-98.709754
T. Izq. Pachuquilla (1° Acceso)	7.00	1	2	24700	3.7	88.8	0.7	4.1	1.3	0.6	0.3	0.3	0.2	92.5	0.7	6.8	0.090	0.505	20.077988	-98.709756
T. Izq. Pachuquilla (2° Acceso)	10.50	1	1	12855	3.2	91.7	0.7	2.9	0.6	0.3	0.2	0.3	0.1	94.9	0.7	4.4	0.070	0.523	20.066526	-98.675721
T. Izq. Pachuquilla (2° Acceso)	10.50	1	2	14116	3.7	90.6	0.8	3.1	0.8	0.4	0.2	0.3	0.1	94.3	0.8	4.9	0.080	0.523	20.066656	-98.675739
T. Der. Cd. Sahagún	16.59	1	1	13286	3.9	90.9	0.7	2.2	0.9	0.6	0.3	0.4	0.1	94.8	0.7	4.5	0.080	0.505	20.060952	-98.635067
T. Der. Cd. Sahagún	16.59	1	2	13527	3.9	90.3	0.8	2.5	1.2	0.6	0.3	0.3	0.1	94.2	0.8	5.0	0.085	0.505	20.061014	-98.635990
T. Der. Cd. Sahagún	16.59	3	1	9494	4.2	88.3	1.1	3.7	1.3	0.7	0.3	0.3	0.1	92.5	1.1	6.4	0.107	0.501	20.044067	-98.609097
T. Der. Cd. Sahagún	16.59	3	2	9549	4.3	87.8	1.1	3.8	1.4	0.7	0.3	0.4	0.2	92.1	1.1	6.8	0.077	0.501	20.044155	-98.608943
T. C. Venta de Carpio - Tulancingo	36.45	1	1	9100	3.7	85.4	1.5	6.4	1.7	0.7	0.3	0.3	0.0	89.1	1.5	9.4	0.083	0.512	20.056700	-98.474954
T. C. Venta de Carpio - Tulancingo	36.45	1	2	9562	3.6	86.2	1.5	5.9	1.6	0.7	0.3	0.2	0.0	89.8	1.5	8.7	0.076	0.512	20.056836	-98.474947
T. C. Venta de Carpio - Tulancingo	36.45	3	1	17074	3.9	88.5	1.1	3.3	1.8	0.8	0.2	0.3	0.1	92.4	1.1	6.5	0.076	0.515	20.062786	-98.440019
T. C. Venta de Carpio - Tulancingo	36.45	3	2	18146	4.6	87.4	1.2	3.5	1.9	0.8	0.2	0.3	0.1	92.0	1.2	6.8	0.075	0.515	20.063386	-98.438917
T. Izq. Libramiento de Tulancingo	59.33	3	1	9292	5.7	87.4	0.7	2.6	1.6	0.8	0.7	0.4	0.1	93.1	0.7	6.2	0.075	0.506	20.151642	-98.285132
T. Izq. Libramiento de Tulancingo	59.33	3	2	9072	4.9	88.5	0.6	2.6	1.6	0.8	0.5	0.4	0.1	93.4	0.6	6.0	0.083	0.506	20.151867	-98.285037

HIDALGO

9 CARR: Pachuca - Tuxpam

CLAVE: 00608

RUTA: MEX-130

AÑO: 2025

LUGAR	ESTACION				CLASIFICACION VEHICULAR EN PORCIENTO										COORDENADAS					
	KM	TE	SC	TDPA	M	A	B	C2	C3	T3S2	T3S3	T3S2R4	OTROS	A	B	C	K'	D	LATITUD	LONGITUD
T. Izq. Huayacocolla	60.16	3	0	16686	6.8	86.2	0.7	2.7	1.4	0.8	0.4	0.8	0.2	93.0	0.7	6.3	0.065	0.502	20.157734	-98.278269
T. Izq. Honey	63.00	3	0	11700	4.7	85.2	1.2	4.6	2.2	0.9	0.4	0.6	0.2	89.9	1.2	8.9	0.072	0.509	20.161487	-98.259556
Lim. Edos. Term. Hgo. Ppia. Pue.	83.18																			
T. Der. Huauchinango (1º Acceso)	94.00	1	0	5512	3.9	85.1	1.5	4.4	3.2	1.0	0.4	0.3	0.2	89.0	1.5	9.5	0.076	0.511	20.169554	-98.073358
T. Der. Huauchinango (2º Acceso)	100.00	3	0	9769	4.2	85.9	1.6	5.0	1.7	0.5	0.6	0.3	0.2	90.1	1.6	8.3	0.080	0.542	20.192895	-98.036079
Villa Ávila Camacho	141.75	1	0	2934	5.7	75.9	3.6	10.6	2.1	1.0	0.4	0.6	0.1	81.6	3.6	14.8	0.074	0.514	20.380183	-97.885200
Villa Ávila Camacho	141.75	3	0	5662	2.6	84.1	3.1	6.8	1.8	0.7	0.4	0.4	0.1	86.7	3.1	10.2	0.079	0.549	20.394223	-97.873543
Piedras Negras	158.70	1	0	3935	4.0	76.1	4.4	8.0	2.9	2.4	0.8	1.3	0.1	80.1	4.4	15.5	0.081	0.628	20.440264	-97.761178
T. Izq. Venustiano Carranza	174.10	3	0	4447	3.5	78.4	4.6	6.9	2.0	2.4	1.4	0.7	0.1	81.9	4.6	13.5	0.082	0.606	20.480028	-97.640533
Lim. Edos. Term. Pue. Ppia. Ver.	180.00																			
T. Der. Poza Rica	197.00	1	0	12764	6.7	84.7	1.2	3.7	1.2	1.1	0.6	0.6	0.2	91.4	1.2	7.4	0.080	0.534	20.519749	-97.492856
T. Der. Poza Rica	197.00	3	0	22953	4.4	85.0	3.0	3.6	1.4	1.2	0.6	0.6	0.2	89.4	3.0	7.6	0.069	0.537	20.560474	-97.476632
Tihuatlán	217.00	1	0	12737	6.3	75.5	5.1	6.7	1.7	2.4	0.8	1.0	0.5	81.8	5.1	13.1	0.071	0.524	20.698886	-97.527871
Tihuatlán	217.00	3	0	3199	8.7	81.5	1.3	3.3	1.9	1.4	1.1	0.7	0.1	90.2	1.3	8.5	0.079	0.532	20.721107	-97.527737
T. C. Tihuatlán - Tuxpam (Cuota)	232.50	1	0	2409	10.1	75.9	1.5	6.9	1.3	2.4	1.4	0.2	0.3	86.0	1.5	12.5	0.079	0.545	20.806893	-97.477632

10 CARR: Portezuelo - Cd. Valles

CLAVE: 00023

RUTA: MEX-085

AÑO: 2025

LUGAR	ESTACION				CLASIFICACION VEHICULAR EN PORCIENTO										COORDENADAS					
	KM	TE	SC	TDPA	M	A	B	C2	C3	T3S2	T3S3	T3S2R4	OTROS	A	B	C	K'	D	LATITUD	LONGITUD
Portezuelo	81.37	3	0	6797	6.6	87.1	1.4	2.2	0.9	0.8	0.7	0.2	0.1	93.7	1.4	4.9	0.077	0.507	20.488379	-99.298648
T. Der. Tasquillo (2º Acceso)	91.25	1	0	5431	6.6	85.2	1.9	2.9	1.1	1.1	0.9	0.2	0.1	91.8	1.9	6.3	0.074	0.515	20.542165	-99.318239
T. Izq. Zimapán (1º Acceso)	113.80	1	0	6529	6.6	86.4	1.5	2.5	0.9	1.1	0.8	0.1	0.1	93.0	1.5	5.5	0.067	0.505	20.703074	-99.334631
T. Izq. Zimapán (1º Acceso)	113.80	3	0	2055	5.4	87.3	1.4	2.4	1.2	1.1	1.0	0.1	0.1	92.7	1.4	5.9	0.072	0.513	20.706113	-99.336171
La Estancia	124.45	3	0	2031	3.9	87.0	1.8	3.1	1.6	1.3	1.0	0.2	0.1	90.9	1.8	7.3	0.090	0.503	20.777744	-99.309753
Trancas	132.00	3	0	1821	4.1	86.2	1.9	3.2	1.6	1.3	1.1	0.4	0.2	90.3	1.9	7.8	0.098	0.549	20.801709	-99.261840
Jacala	181.00	3	0	2826	4.7	87.0	1.5	5.2	0.6	0.9	0.0	0.1	0.0	91.7	1.5	6.8	0.090	0.545	21.002469	-99.184780
Zacate Grande	223.80	1	0	1011	5.1	87.2	2.0	3.4	1.5	0.3	0.2	0.1	0.2	92.3	2.0	5.7	0.074	0.508	21.104693	-99.004439
T. Izq. Pisaflores	236.00	3	0	2133	8.4	83.5	1.5	4.1	1.4	0.6	0.3	0.1	0.1	91.9	1.5	6.6	0.081	0.504	21.154209	-98.945673
Lim. Edos. Term. Hgo. Ppia. S. L. P.	250.00																			
Tamazunchale	275.40	1	0	6780	25.5	67.2	2.5	2.1	0.6	0.6	0.5	0.8	0.2	92.7	2.5	4.8	0.076	0.567	21.263610	-98.799507
T. Izq. Xilitla	310.22	1	0	4369	10.6	78.8	1.7	3.2	2.8	1.3	0.8	0.7	0.1	89.4	1.7	8.9	0.080	0.594	21.443219	-98.925593
T. Izq. Xilitla	310.22	3	0	4033	13.3	73.3	2.1	4.6	2.7	1.9	1.1	0.9	0.1	86.6	2.1	11.3	0.079	0.556	21.448769	-98.930454
T. Izq. Aquismón	335.30	1	1	3151	9.6	77.2	2.2	4.5	3.2	1.9	0.8	0.5	0.1	86.8	2.2	11.0	0.082	0.526	21.616044	-98.987429
T. Izq. Aquismón	335.30	1	2	3326	9.4	76.8	2.4	4.8	3.3	1.7	0.7	0.8	0.1	86.2	2.4	11.4	0.081	0.526	21.616041	-98.987460

HIDALGO

10 CARR: Portezuelo - Cd. Valles

CLAVE: 00023

RUTA: MEX-085

AÑO: 2025

LUGAR	ESTACION				CLASIFICACION VEHICULAR EN PORCIENTO										COORDENADAS					
	KM	TE	SC	TDPA	M	A	B	C2	C3	T3S2	T3S3	T3S2R4	OTROS	A	B	C	K'	D	LATITUD	LONGITUD
Agua Hedionda	348.00	1	1	3510	4.5	80.2	2.3	5.2	4.1	1.8	1.3	0.5	0.1	84.7	2.3	13.0	0.088	0.513	21.708405	-98.962468
Agua Hedionda	348.00	1	2	3401	4.6	80.9	2.1	5.7	3.6	1.5	0.8	0.7	0.1	85.5	2.1	12.4	0.083	0.513	21.708428	-98.962623
X. C. Rayón - Ent. Tamuín (Cuota)	368.00	1	1	4147	4.5	85.9	1.9	3.6	2.5	0.7	0.6	0.2	0.1	90.4	1.9	7.7	0.093	0.554	21.884415	-98.947300
X. C. Rayón - Ent. Tamuín (Cuota)	368.00	1	2	4213	4.6	85.4	1.8	3.9	2.6	0.7	0.6	0.3	0.1	90.0	1.8	8.2	0.106	0.554	21.884393	-98.947394
Cd. Valles	380.50	1	1	6275	5.1	86.5	1.8	3.6	1.7	0.5	0.4	0.3	0.1	91.6	1.8	6.6	0.082	0.576	21.959218	-98.998620
Cd. Valles	380.50	1	2	6226	5.1	86.5	1.8	3.7	1.7	0.5	0.3	0.3	0.1	91.6	1.8	6.6	0.102	0.576	21.959277	-98.998774

11 CARR: Portezuelo - Palmillas

CLAVE: 00194

RUTA: MEX-045

AÑO: 2025

LUGAR	ESTACION				CLASIFICACION VEHICULAR EN PORCIENTO										COORDENADAS					
	KM	TE	SC	TDPA	M	A	B	C2	C3	T3S2	T3S3	T3S2R4	OTROS	A	B	C	K'	D	LATITUD	LONGITUD
Portezuelo	0.00	3	1	5111	3.1	72.0	3.3	8.8	2.3	5.9	2.6	1.6	0.4	75.1	3.3	21.6	0.089	0.506	20.486612	-99.304318
Portezuelo	0.00	3	2	5228	2.8	72.8	3.1	8.7	2.1	5.6	3.0	1.5	0.4	75.6	3.1	21.3	0.084	0.506	20.486513	-99.304319
Jonacapa	29.41	3	0	6332	4.2	74.3	2.7	7.2	2.8	4.3	2.9	1.3	0.3	78.5	2.7	18.8	0.091	0.507	20.435417	-99.536445
Huichapan	45.10	1	1	4450	2.1	76.7	3.4	6.0	2.5	3.7	2.6	2.4	0.6	78.8	3.4	17.8	0.108	0.504	20.395475	-99.635310
Huichapan	45.10	1	2	4526	1.9	77.8	3.0	5.7	2.3	4.0	2.3	2.3	0.7	79.7	3.0	17.3	0.082	0.504	20.395407	-99.635239
T. Izq. Nopala	56.15	1	0	10041	3.0	78.1	3.0	4.8	1.8	5.0	2.0	1.8	0.5	81.1	3.0	15.9	0.095	0.501	20.318670	-99.712683
T. Izq. Nopala	56.15	3	0	8617	2.9	73.3	3.2	5.7	2.4	5.6	3.7	2.4	0.8	76.2	3.2	20.6	0.083	0.508	20.309674	-99.721409
Lim. Edos. Term. Hgo. Ppia. Oro.	71.40																			
Palmillas	80.00	1	1	5833	2.1	74.9	2.3	9.0	2.0	3.6	3.3	2.0	0.8	77.0	2.3	20.7	0.074	0.506	20.322258	-99.928747
Palmillas	80.00	1	2	5966	1.8	74.9	2.5	9.1	2.2	3.6	3.3	2.0	0.6	76.7	2.5	20.8	0.078	0.506	20.322213	-99.928819

12 CARR: Tamazunchale - San Felipe Orizatlán

CLAVE: 00609

RUTA: MEX-085

AÑO: 2025

LUGAR	ESTACION				CLASIFICACION VEHICULAR EN PORCIENTO										COORDENADAS					
	KM	TE	SC	TDPA	M	A	B	C2	C3	T3S2	T3S3	T3S2R4	OTROS	A	B	C	K'	D	LATITUD	LONGITUD
T. C. Portezuelo - Cd. Valles	0.00	3	0	17226	25.2	69.8	0.8	2.8	0.5	0.4	0.1	0.3	0.1	95.0	0.8	4.2	0.077	0.525	21.250604	-98.765548
Lim. Edos. Term. S. L. P. Ppia. Hgo.	18.50																			
San Felipe Orizatlán	27.10	1	0	3582	18.4	69.1	2.0	7.3	1.5	0.7	0.4	0.5	0.1	87.5	2.0	10.5	0.080	0.528	21.170696	-98.617911

13 CARR: Venta de Carpio - T. C. (Pachuca - Tuxpam)

CLAVE: 00455

RUTA: MEX-132

AÑO: 2025

LUGAR	ESTACION				CLASIFICACION VEHICULAR EN PORCIENTO										COORDENADAS					
	KM	TE	SC	TDPA	M	A	B	C2	C3	T3S2	T3S3	T3S2R4	OTROS	A	B	C	K'	D	LATITUD	LONGITUD
T. C. México - Pachuca (Libre)	0.00																			

HIDALGO

13 CARR: Venta de Carpio - T. C. (Pachuca - Tuxpam)

CLAVE: 00455

RUTA: MEX-132

AÑO: 2025

LUGAR	ESTACION				CLASIFICACION VEHICULAR EN PORCIENTO										COORDENADAS					
	KM	TE	SC	TDPA	M	A	B	C2	C3	T3S2	T3S3	T3S2R4	OTROS	A	B	C	K'	D	LATITUD	LONGITUD
T. Der. Texcoco	6.42	3	1	12044	4.9	88.2	0.6	2.7	1.5	1.4	0.3	0.3	0.1	93.1	0.6	6.3	0.073	0.515	19.610865	-98.947186
T. Der. Texcoco	6.42	3	2	12763	5.0	88.0	0.7	2.5	1.5	1.6	0.3	0.3	0.1	93.0	0.7	6.3	0.069	0.515	19.610960	-98.947148
Tepexpan	7.57	3	1	11644	5.6	86.4	0.6	4.1	1.2	1.4	0.3	0.2	0.2	92.0	0.6	7.4	0.078	0.521	19.620547	-98.934842
Tepexpan	7.57	3	2	10716	5.4	86.7	0.5	4.2	1.4	1.1	0.3	0.3	0.1	92.1	0.5	7.4	0.081	0.521	19.620582	-98.934916
Acolman	12.42	1	0	18724	7.3	85.1	0.8	2.2	0.9	1.4	0.7	1.1	0.5	92.4	0.8	6.8	0.079	0.507	19.632774	-98.917807
Teotihuacán	20.70	3	0	26073	8.2	84.0	0.6	4.6	0.7	0.8	0.2	0.5	0.4	92.2	0.6	7.2	0.072	0.531	19.681618	-98.863230
T. Der. Otumba	31.79	1	0	16948	4.7	87.6	0.8	3.1	1.2	0.7	0.7	0.5	0.7	92.3	0.8	6.9	0.071	0.514	19.717634	-98.803096
T. Der. Otumba	31.79	3	0	6028	6.7	82.9	1.6	3.7	2.1	1.1	0.7	0.7	0.5	89.6	1.6	8.8	0.074	0.527	19.722639	-98.788347
Ent. Santiago Tolman	34.09																			
X. C. Tizayuca - Otumba	37.85	1	1	12534	3.4	77.4	3.5	5.0	1.9	4.7	1.7	1.9	0.5	80.8	3.5	15.7	0.093	0.504	19.744546	-98.763499
X. C. Tizayuca - Otumba	37.85	1	2	12338	3.3	77.9	3.4	5.1	1.8	4.5	1.8	1.7	0.5	81.2	3.4	15.4	0.075	0.504	19.744711	-98.763508
X. C. Tizayuca - Otumba	37.85	3	1	16286	2.7	80.7	2.9	3.5	2.1	4.6	1.3	1.7	0.5	83.4	2.9	13.7	0.084	0.510	19.759167	-98.750773
X. C. Tizayuca - Otumba	37.85	3	2	16938	2.9	80.7	2.7	3.7	2.0	4.4	1.4	1.8	0.4	83.6	2.7	13.7	0.124	0.510	19.759226	-98.750886
X. C. Arco Norte de La Ciudad de México	48.00	1	1	15077	1.3	76.7	4.2	6.7	2.0	5.7	1.1	1.8	0.5	78.0	4.2	17.8	0.094	0.517	19.827746	-98.705586
X. C. Arco Norte de La Ciudad de México	48.00	1	2	14073	1.5	76.1	4.4	6.8	2.1	5.8	1.2	1.7	0.4	77.6	4.4	18.0	0.132	0.517	19.827880	-98.705633
X. C. Arco Norte de La Ciudad de México	48.00	3	1	11878	1.7	84.2	2.3	4.3	1.3	3.2	1.5	1.3	0.2	85.9	2.3	11.8	0.101	0.506	19.839863	-98.693018
X. C. Arco Norte de La Ciudad de México	48.00	3	2	12178	1.5	84.6	2.2	4.2	1.1	3.1	1.7	1.2	0.4	86.1	2.2	11.7	0.111	0.506	19.838347	-98.694920
Lim. Edos. Term. Méx. Ppia. Hgo.	51.00																			
X. C. Pachuca - Cd. Sahagún	54.00	3	1	12366	1.6	74.7	4.3	9.0	2.9	3.9	2.1	1.3	0.2	76.3	4.3	19.4	0.091	0.502	19.882134	-98.658005
X. C. Pachuca - Cd. Sahagún	54.00	3	2	12456	1.5	74.6	4.5	9.1	2.8	3.7	2.2	1.2	0.4	76.1	4.5	19.4	0.096	0.502	19.882231	-98.658075
X. C. Calpulalpan - El Ocote	64.17	1	1	10168	1.6	78.0	2.3	7.6	3.4	3.8	1.8	1.1	0.4	79.6	2.3	18.1	0.087	0.508	19.918215	-98.585487
X. C. Calpulalpan - El Ocote	64.17	1	2	9838	1.4	78.3	2.1	7.7	3.3	3.9	1.7	1.1	0.5	79.7	2.1	18.2	0.084	0.508	19.913990	-98.589884
X. C. Calpulalpan - El Ocote	64.17	3	1	9068	2.4	77.6	2.4	8.1	3.1	2.8	1.8	1.2	0.6	80.0	2.4	17.6	0.081	0.521	19.927027	-98.573927
X. C. Calpulalpan - El Ocote	64.17	3	2	9848	2.5	77.8	2.2	8.2	3.1	2.9	1.7	1.1	0.5	80.3	2.2	17.5	0.092	0.521	19.927138	-98.573996
T. C. Pachuca - Tuxpam	84.08	1	1	15257	2.5	80.3	3.1	4.7	2.6	3.5	1.5	1.1	0.7	82.8	3.1	14.1	0.076	0.519	20.048948	-98.463580
T. C. Pachuca - Tuxpam	84.08	1	2	16472	2.7	80.1	3.3	4.9	2.4	3.3	1.6	1.0	0.7	82.8	3.3	13.9	0.072	0.519	20.048508	-98.464289

14 CARR: Ent. Tulancingo - Venta Grande (Cuota)

CLAVE: 00026

RUTA: MEX-132D

AÑO: 2025

LUGAR	ESTACION				CLASIFICACION VEHICULAR EN PORCIENTO										COORDENADAS					
	KM	TE	SC	TDPA	M	A	B	C2	C3	T3S2	T3S3	T3S2R4	OTROS	A	B	C	K'	D	LATITUD	LONGITUD
T. C. Pachuca - Tuxpam	84.40																			
T. Izq. Acatlán	92.20	1	0	22309	3.9	80.6	1.9	4.6	2.1	3.2	1.2	1.8	0.7	84.5	1.9	13.6	0.079	0.507	20.105324	-98.406560
T. Izq. Acatlán	92.20	3	0	22570	2.4	75.4	4.2	6.4	2.3	4.4	1.7	2.5	0.7	77.8	4.2	18.0	0.100	0.511	20.110774	-98.393634
Plaza de Cobro San Alejo (Tejocotal)	106.20	1	0	21316	3.3	73.5	5.9	6.3	1.9	3.4	1.3	3.6	0.8	76.8	5.9	17.3	0.082	0.502	20.150737	-98.302148

HIDALGO

14 CARR: Ent. Tulancingo - Venta Grande (Cuota)

CLAVE: 00026

RUTA: MEX-132D

AÑO: 2025

LUGAR	ESTACION				CLASIFICACION VEHICULAR EN PORCIENTO													COORDENADAS		
	KM	TE	SC	TDPA	M	A	B	C2	C3	T3S2	T3S3	T3S2R4	OTROS	A	B	C	K'	D	LATITUD	LONGITUD
Plaza de Cobro San Alejo (Tejocotal)	106.20	2	0	10082	1.0	69.8	5.1	3.1	4.5	6.1	2.5	6.5	1.4	70.8	5.1	24.1	0.115	0.500	20.147472	-98.285748
T. C. Tlaxco - Tejocotal (Cuota)	123.88	1	0	18359	5.1	72.7	3.8	6.4	2.6	4.7	1.7	2.4	0.6	77.8	3.8	18.4	0.094	0.508	20.141490	-98.136693

15 CARR: Libramiento Norte de la Ciudad de México (Cuota)

CLAVE: 0902

RUTA: MEX-055D

AÑO: 2025

LUGAR	ESTACION				CLASIFICACION VEHICULAR EN PORCIENTO													COORDENADAS		
	KM	TE	SC	TDPA	M	A	B	C2	C3	T3S2	T3S3	T3S2R4	OTROS	A	B	C	K'	D	LATITUD	LONGITUD
T. C. Toluca - Palmillas	0.00																			
X. C. Toluca - Palmillas	12.90	1	1	6522	3.6	57.9	7.6	4.5	2.6	15.8	1.8	5.4	0.8	61.5	7.6	30.9	0.079	0.510	19.916387	-99.850993
X. C. Toluca - Palmillas	12.90	1	2	6786	3.3	57.6	7.7	4.4	2.6	15.9	2.0	5.6	0.9	60.9	7.7	31.4	0.084	0.510	19.916387	-99.851101
X. C. Toluca - Palmillas	12.90	3	1	6774	5.8	56.2	7.8	4.9	3.0	14.5	1.7	5.2	0.9	62.0	7.8	30.2	0.084	0.509	19.922884	-99.836748
X. C. Toluca - Palmillas	12.90	3	2	6544	5.8	56.1	7.7	4.7	3.0	14.8	1.6	5.3	1.0	61.9	7.7	30.4	0.076	0.509	19.923129	-99.836797
C. P. Jilotepec	48.70	1	1	6921	3.8	59.0	8.7	5.1	2.9	13.3	1.5	4.8	0.9	62.8	8.7	28.5	0.065	0.527	19.969025	-99.538005
C. P. Jilotepec	48.70	1	2	6220	3.8	58.4	8.8	5.1	2.8	14.2	1.2	4.8	0.9	62.2	8.8	29.0	0.067	0.527	19.969163	-99.538155
C. P. Jilotepec	48.70	3	1	8509	3.8	57.8	7.2	5.8	2.8	15.2	2.0	4.6	0.8	61.6	7.2	31.2	0.069	0.504	19.980003	-99.516548
C. P. Jilotepec	48.70	3	2	8643	3.2	55.0	7.6	6.5	3.3	16.1	2.3	5.2	0.8	58.2	7.6	34.2	0.064	0.504	19.980412	-99.515964
X. C. México - Querétaro	54.00	3	1	9266	4.5	50.6	7.8	5.1	3.2	17.2	4.0	6.7	0.9	55.1	7.8	37.1	0.082	0.515	20.003079	-99.483508
X. C. México - Querétaro	54.00	3	2	9856	4.3	53.1	7.8	5.2	3.0	15.3	3.4	7.0	0.9	57.4	7.8	34.8	0.071	0.515	20.003089	-99.483658
Plaza de Cobro Querétaro	55.00	3	1	9570	0.5	52.5	2.2	4.5	5.5	19.6	4.3	8.0	2.9	53.0	2.2	44.8	0.067	0.500	19.998714	-99.487788
Plaza de Cobro Querétaro	55.00	3	2	9790	0.5	53.3	2.2	4.5	5.4	19.3	4.2	7.8	2.8	53.8	2.2	44.0	0.067	0.500	19.998714	-99.487788
Lim. Edos. Term. Méx. Ppia. Hgo.	60.72																			
X. C. Ent. Tepeji del Río - Tlahuelilpan	79.00	1	1	10614	5.8	50.2	7.9	5.9	4.7	15.2	3.1	6.2	1.0	56.0	7.9	36.1	0.081	0.524	20.097437	-99.290401
X. C. Ent. Tepeji del Río - Tlahuelilpan	79.00	1	2	11684	5.4	51.1	7.7	5.7	4.8	15.0	3.3	6.1	0.9	56.5	7.7	35.8	0.063	0.524	20.097511	-99.290419
X. C. Ent. Tepeji del Río - Tlahuelilpan	79.00	3	1	12490	6.6	57.4	5.6	5.1	3.1	12.5	3.4	5.4	0.9	64.0	5.6	30.4	0.074	0.503	20.094023	-99.271049
X. C. Ent. Tepeji del Río - Tlahuelilpan	79.00	3	2	12338	6.3	57.9	5.8	5.3	3.0	12.7	3.0	5.2	0.8	64.2	5.8	30.0	0.084	0.503	20.094088	-99.270856
X. C. Los Reyes - El Tephé	86.40	1	1	13321	2.8	55.3	6.0	5.4	3.1	16.4	3.7	6.4	0.9	58.1	6.0	35.9	0.066	0.502	20.070242	-99.228235
X. C. Los Reyes - El Tephé	86.40	1	2	13222	3.1	55.4	5.8	5.2	3.3	16.0	3.7	6.7	0.8	58.5	5.8	35.7	0.065	0.502	20.070098	-99.227673
X. C. Los Reyes - El Tephé	86.40	3	1	13063	3.1	57.9	4.7	7.2	2.7	13.9	3.4	6.3	0.8	61.0	4.7	34.3	0.071	0.521	20.064819	-99.213860
X. C. Los Reyes - El Tephé	86.40	3	2	12001	3.2	57.7	5.0	6.9	3.0	14.0	3.2	6.2	0.8	60.9	5.0	34.1	0.063	0.521	20.064964	-99.213810
Lim. Edos. Term. Hgo. Ppia. Méx.	95.75																			
X. C. (Los Reyes - El Tephé) - Tianguistongo	108.60	1	1	12950	6.3	55.1	5.7	4.8	3.1	14.6	2.7	6.8	0.9	61.4	5.7	32.9	0.085	0.501	19.958449	-99.067686
X. C. (Los Reyes - El Tephé) - Tianguistongo	108.60	1	2	13012	6.0	55.1	5.9	4.6	2.9	14.4	3.1	7.1	0.9	61.1	5.9	33.0	0.090	0.501	19.958597	-99.067668
X. C. (Los Reyes - El Tephé) - Tianguistongo	108.60	3	1	12215	3.6	56.2	5.8	6.4	3.0	16.4	2.8	5.0	0.8	59.8	5.8	34.4	0.065	0.510	19.955409	-99.043234
X. C. (Los Reyes - El Tephé) - Tianguistongo	108.60	3	2	11750	3.5	56.5	5.6	6.2	3.2	16.0	2.7	5.3	1.0	60.0	5.6	34.4	0.072	0.510	19.955283	-99.050324
Lim. Edos. Term. Méx. Ppia. Hgo.	115.89																			

HIDALGO

15 CARR: Libramiento Norte de la Ciudad de México (Cuota)

CLAVE: 0902

RUTA: MEX-055D

AÑO: 2025

LUGAR	ESTACION				CLASIFICACION VEHICULAR EN PORCIENTO										COORDENADAS					
	KM	TE	SC	TDPA	M	A	B	C2	C3	T3S2	T3S3	T3S2R4	OTROS	A	B	C	K'	D	LATITUD	LONGITUD
X. C. México - Pachuca	127.30	1	1	13378	2.9	57.5	5.6	5.4	3.3	15.6	3.1	5.8	0.8	60.4	5.6	34.0	0.079	0.511	19.932291	-98.902521
X. C. México - Pachuca	127.30	1	2	12786	3.0	54.6	5.9	5.7	3.6	16.9	3.5	6.0	0.8	57.6	5.9	36.5	0.069	0.511	19.932467	-98.902628
X. C. México - Pachuca	127.30	3	1	9308	3.7	48.8	5.9	4.4	4.2	19.9	4.5	7.7	0.9	52.5	5.9	41.6	0.078	0.510	19.926710	-98.878888
X. C. México - Pachuca	127.30	3	2	9694	3.4	51.1	6.0	4.1	3.7	19.3	4.1	7.4	0.9	54.5	6.0	39.5	0.076	0.510	19.926858	-98.878818
Lim. Edos. Term. Hgo. Ppia. Méx.	143.98																			
X. C. Venta de Carpio - T. C. (Pachuca - Tulancingo)	151.11	1	1	10127	4.4	55.5	4.0	4.6	4.0	16.6	3.5	6.5	0.9	59.9	4.0	36.1	0.077	0.512	19.840129	-98.708297
X. C. Venta de Carpio - T. C. (Pachuca - Tulancingo)	151.11	1	2	9658	4.5	55.0	3.7	4.2	4.8	16.3	3.7	6.9	0.9	59.5	3.7	36.8	0.072	0.512	19.839982	-98.707895
X. C. Venta de Carpio - T. C. (Pachuca - Tulancingo)	151.11	3	1	9360	5.5	51.6	6.0	5.0	3.7	17.5	3.6	6.2	0.9	57.1	6.0	36.9	0.077	0.506	19.827054	-98.691982
X. C. Venta de Carpio - T. C. (Pachuca - Tulancingo)	151.11	3	2	9150	5.2	50.1	6.4	5.1	4.0	17.8	4.0	6.5	0.9	55.3	6.4	38.3	0.077	0.506	19.829124	-98.694347
X. C. Ent. Tolman - Cd. Sahagún	162.55	1	1	9221	3.8	49.7	7.9	5.7	3.1	19.0	3.8	6.2	0.8	53.5	7.9	38.6	0.083	0.510	19.760143	-98.631574
X. C. Ent. Tolman - Cd. Sahagún	162.55	1	2	9593	3.7	50.0	8.4	5.4	3.0	18.6	3.7	6.4	0.8	53.7	8.4	37.9	0.085	0.510	19.760215	-98.631435
X. C. Ent. Tolman - Cd. Sahagún	162.55	3	1	10614	2.4	49.4	7.2	7.6	3.1	18.3	4.3	6.9	0.8	51.8	7.2	41.0	0.069	0.502	19.743409	-98.622630
X. C. Ent. Tolman - Cd. Sahagún	162.55	3	2	10696	2.0	48.9	7.4	7.7	3.4	18.4	3.8	7.6	0.8	50.9	7.4	41.7	0.087	0.502	19.743483	-98.622492
Lim. Edos. Term. Méx. Ppia. Hgo.	166.53																			
X. C. Calpulallpan - El Ocote	180.39	1	1	13451	8.2	44.9	7.0	5.4	3.6	20.1	4.3	5.6	0.9	53.1	7.0	39.9	0.075	0.534	19.642176	-98.565529
X. C. Calpulallpan - El Ocote	180.39	1	2	11728	8.0	44.0	7.0	5.6	3.9	20.7	4.5	5.5	0.8	52.0	7.0	41.0	0.068	0.534	19.642385	-98.565486
X. C. Calpulallpan - El Ocote	180.39	3	1	12619	4.6	51.5	6.7	5.9	2.6	17.0	4.1	6.6	1.0	56.1	6.7	37.2	0.085	0.508	19.605803	-98.536379
X. C. Calpulallpan - El Ocote	180.39	3	2	13029	4.3	51.6	6.4	6.1	2.8	17.2	3.8	6.9	0.9	55.9	6.4	37.7	0.071	0.508	19.605789	-98.536163
Lim. Edos. Term. Hgo. Ppia. Tlax.	180.98																			
X. C. Los Reyes - Zacatepec	196.70	1	1	10452	6.0	50.6	5.7	4.4	2.9	18.7	4.1	6.8	0.8	56.6	5.7	37.7	0.067	0.502	19.520113	-98.472795
X. C. Los Reyes - Zacatepec	196.70	1	2	11279	6.0	49.9	5.8	4.5	3.1	18.8	4.2	6.9	0.8	55.9	5.8	38.3	0.072	0.502	19.520162	-98.472717
X. C. Los Reyes - Zacatepec	196.70	3	1	9323	3.2	57.7	4.6	4.2	3.2	17.6	3.0	5.6	0.9	60.9	4.6	34.5	0.067	0.501	19.508526	-98.467085
X. C. Los Reyes - Zacatepec	196.70	3	2	8644	3.3	58.2	4.5	4.1	3.1	17.4	3.1	5.5	0.8	61.5	4.5	34.0	0.071	0.501	19.508556	-98.467002
X. C. San Martín Texmelucan - Tlaxcala - El Molinito	220.95	1	1	9981	4.2	52.2	6.6	5.8	2.8	18.1	3.6	5.8	0.9	56.4	6.6	37.0	0.067	0.522	19.316659	-98.407113
X. C. San Martín Texmelucan - Tlaxcala - El Molinito	220.95	1	2	8839	4.3	52.0	6.7	6.0	2.7	18.3	3.4	5.7	0.9	56.3	6.7	37.0	0.067	0.522	19.316638	-98.406979
X. C. San Martín Texmelucan - Tlaxcala - El Molinito	220.95	3	1	11238	3.5	64.7	6.5	4.7	2.6	11.2	2.3	3.6	0.9	68.2	6.5	25.3	0.065	0.547	19.288087	-98.410751
X. C. San Martín Texmelucan - Tlaxcala - El Molinito	220.95	3	2	10467	3.5	63.6	6.6	4.7	2.6	11.8	2.5	3.9	0.8	67.1	6.6	26.3	0.061	0.547	19.288032	-98.410642
Plaza de Cobro San Martín Texmelucan	222.00	1	1	8015	0.4	50.9	2.1	5.4	5.7	22.3	3.5	7.6	2.1	51.3	2.1	46.6	0.067	0.500	19.301809	-98.409588
Plaza de Cobro San Martín Texmelucan	222.00	1	2	8020	0.4	50.9	2.1	5.4	5.7	22.3	3.5	7.6	2.1	51.3	2.1	46.6	0.067	0.500	19.301809	-98.409588
T. C. San Martín Texmelucan - Ocotoxco (Cuota)	222.44																			
T. C. México - Puebla (Cuota)	226.73	1	1	10805	3.4	61.8	6.8	4.8	3.2	12.8	2.4	3.9	0.9	65.2	6.8	28.0	0.070	0.615	19.270097	-98.419965
T. C. México - Puebla (Cuota)	226.73	1	2	10075	3.4	61.8	6.9	4.9	3.0	12.5	2.6	4.0	0.9	65.2	6.9	27.9	0.089	0.615	19.270022	-98.419870

HIDALGO

16 CARR: México - Pachuca (Cuota)

CLAVE: 00432

RUTA: MEX-085D

AÑO: 2025

LUGAR	ESTACION				CLASIFICACION VEHICULAR EN PORCIENTO										COORDENADAS					
	KM	TE	SC	TDPA	M	A	B	C2	C3	T3S2	T3S3	T3S2R4	OTROS	A	B	C	K'	D	LATITUD	LONGITUD
T. C. México - Pachuca (Libre)	0.00																			
Lim. Edos. Term. CDMX Ppia. Méx.	9.86																			
Plaza de Cobro Ojo de Agua	25.00	2	1	35982	3.4	85.9	4.8	2.3	1.5	1.5	0.2	0.3	0.1	89.3	4.8	5.9	0.081	0.500	19.618737	-99.029315
Plaza de Cobro Ojo de Agua	25.00	2	2	35982	3.4	85.9	4.8	2.3	1.5	1.5	0.2	0.3	0.1	89.3	4.8	5.9	0.081	0.500	19.618737	-99.029315
Plaza de Cobro Ojo de Agua	25.00	3	1	40359	3.2	85.6	2.1	5.4	1.1	1.6	0.3	0.5	0.2	88.8	2.1	9.1	0.077	0.505	19.635307	-99.020636
Plaza de Cobro Ojo de Agua	25.00	3	2	39575	3.0	86.2	1.9	5.3	1.0	1.4	0.3	0.7	0.2	89.2	1.9	8.9	0.073	0.505	19.633746	-99.021753
X. C. México - Pachuca (Libre) Ent. Ojo de Agua	30.62	3	1	34665	3.6	85.1	2.3	4.6	1.4	1.6	0.3	0.8	0.3	88.7	2.3	9.0	0.070	0.500	19.671289	-98.995122
X. C. México - Pachuca (Libre) Ent. Ojo de Agua	30.62	3	2	34633	3.8	84.6	2.5	4.8	1.3	1.7	0.4	0.6	0.3	88.4	2.5	9.1	0.086	0.500	19.675433	-98.991007
T. Izq. Tecámac	35.62	3	1	33809	1.6	87.4	2.7	3.1	2.0	2.2	0.5	0.4	0.1	89.0	2.7	8.3	0.066	0.520	19.703357	-98.969497
T. Izq. Tecámac	35.62	3	2	36898	1.8	87.8	2.5	3.0	2.2	1.9	0.4	0.3	0.1	89.6	2.5	7.9	0.087	0.520	19.705457	-98.968424
T. Izq. AIFA	40.50	3	1	36641	2.7	88.6	1.8	2.8	1.6	1.8	0.4	0.2	0.1	91.3	1.8	6.9	0.077	0.508	19.744422	-98.945996
T. Izq. AIFA	40.50	3	2	35422	2.6	88.9	1.7	2.7	1.5	1.9	0.3	0.3	0.1	91.5	1.7	6.8	0.087	0.508	19.743813	-98.946111
Lim. Edos. Term. Méx. Ppia. Hgo.	49.60																			
X. C. Otumba - Tizayuca	53.45	1	1	38678	2.0	88.7	2.1	2.5	1.3	2.2	0.5	0.4	0.3	90.7	2.1	7.2	0.086	0.515	19.826751	-98.949363
X. C. Otumba - Tizayuca	53.45	1	2	36126	1.9	89.5	2.0	2.4	1.2	2.1	0.4	0.3	0.2	91.4	2.0	6.6	0.125	0.515	19.827443	-98.949661
T. C. México - Pachuca (Libre)	60.50	1	1	23993	2.5	88.7	2.4	2.1	1.2	2.0	0.5	0.4	0.2	91.2	2.4	6.4	0.082	0.507	19.883677	-98.937499
T. C. México - Pachuca (Libre)	60.50	1	2	24701	2.7	89.1	2.3	2.0	1.1	1.9	0.4	0.3	0.2	91.8	2.3	5.9	0.097	0.507	19.881569	-98.937781

17 CARR: Tejocotal - Nuevo Necaxa (Cuota)

CLAVE: 00211

RUTA: MEX-132D

AÑO: 2025

LUGAR	ESTACION				CLASIFICACION VEHICULAR EN PORCIENTO										COORDENADAS					
	KM	TE	SC	TDPA	M	A	B	C2	C3	T3S2	T3S3	T3S2R4	OTROS	A	B	C	K'	D	LATITUD	LONGITUD
T. C. Tlaxco - Tejocotal (Cuota)	0.00	3	0	12804	3.0	72.3	6.0	6.9	3.4	3.9	1.3	2.3	0.9	75.3	6.0	18.7	0.086	0.513	20.135835	-98.113309
Lim. Edos. Term. Hgo. Ppia. Pue.	2.10																			
Plaza de Cobro Nuevo Necaxa	17.00	1	1	5864	2.2	73.3	4.4	6.3	3.0	5.8	1.8	2.4	0.8	75.5	4.4	20.1	0.074	0.672	20.168758	-98.026674
Plaza de Cobro Nuevo Necaxa	17.00	1	2	5239	1.8	71.8	5.2	7.0	2.7	6.1	2.3	2.7	0.4	73.6	5.2	21.2	0.125	0.672	20.168723	-98.026729
Plaza de Cobro Nuevo Necaxa	17.00	2	0	2003	0.8	76.8	1.5	3.9	4.4	6.2	3.0	2.4	1.0	77.6	1.5	20.9	0.092	0.500	20.186559	-98.029829
T. C. Pachuca - Tuxpam	18.70																			

18 CARR: México - Querétaro (Cuota)

CLAVE: 00411

RUTA: MEX-057-MEX-057D

AÑO: 2025

LUGAR	ESTACION				CLASIFICACION VEHICULAR EN PORCIENTO										COORDENADAS					
	KM	TE	SC	TDPA	M	A	B	C2	C3	T3S2	T3S3	T3S2R4	OTROS	A	B	C	K'	D	LATITUD	LONGITUD
México	0.00																			
Lim. Edos. Term. CDMX Ppia. Méx.	11.30																			

HIDALGO

18 CARR: México - Querétaro (Cuota)

CLAVE: 00411

RUTA: MEX-057-MEX-057D

AÑO: 2025

LUGAR	ESTACION				CLASIFICACION VEHICULAR EN PORCIENTO										COORDENADAS					
	KM	TE	SC	TDPA	M	A	B	C2	C3	T3S2	T3S3	T3S2R4	OTROS	A	B	C	K'	D	LATITUD	LONGITUD
Lechería	29.41																			
Plaza de Cobro Tepetzotlán	43.01	2	1	33105	0.6	74.5	3.6	4.2	3.1	10.9	0.6	2.0	0.5	75.1	3.6	21.3	0.077	0.500	19.715361	-99.207448
Plaza de Cobro Tepetzotlán	43.01	2	2	33105	0.6	74.5	3.6	4.2	3.1	10.9	0.6	2.0	0.5	75.1	3.6	21.3	0.077	0.500	19.715361	-99.207448
Ent. Jorobas	56.18	1	1	35058	1.4	67.5	4.6	7.8	3.3	11.1	1.4	2.1	0.8	68.9	4.6	26.5	0.071	0.515	19.811452	-99.238518
Ent. Jorobas	56.18	1	2	32877	1.3	67.7	4.8	7.7	3.0	10.9	1.5	2.3	0.8	69.0	4.8	26.2	0.061	0.515	19.801501	-99.234163
Ent. Jorobas	56.18	3	1	47374	3.1	58.7	4.9	8.0	3.4	15.3	2.2	3.4	1.0	61.8	4.9	33.3	0.073	0.502	19.830902	-99.261767
Ent. Jorobas	56.18	3	2	46832	3.2	58.8	5.2	8.0	3.3	15.0	2.0	3.5	1.0	62.0	5.2	32.8	0.065	0.502	19.832742	-99.266979
Lim. Edos. Term. Méx. Ppia. Hgo.	59.85																			
T. Der. Tepeji del Río	69.36	1	1	38226	4.3	69.3	4.4	7.2	2.7	7.7	1.1	2.5	0.8	73.6	4.4	22.0	0.076	0.504	19.862948	-99.313324
T. Der. Tepeji del Río	69.36	1	2	37604	4.0	69.1	4.3	7.4	2.9	7.5	1.2	2.7	0.9	73.1	4.3	22.6	0.072	0.504	19.871090	-99.338581
T. Der. Tepeji del Río	69.36	3	1	34824	4.9	68.8	4.4	6.8	2.8	8.0	1.2	2.4	0.7	73.7	4.4	21.9	0.081	0.507	19.920808	-99.370317
T. Der. Tepeji del Río	69.36	3	2	35899	5.2	68.8	4.6	6.6	3.0	7.8	1.0	2.2	0.8	74.0	4.6	21.4	0.095	0.507	19.920713	-99.370409
T. Izq. Jilotepec	83.75	1	1	34363	5.4	68.7	3.2	7.4	2.8	7.9	1.4	2.7	0.5	74.1	3.2	22.7	0.078	0.518	19.972297	-99.434174
T. Izq. Jilotepec	83.75	1	2	31829	5.3	68.7	3.3	7.5	2.7	7.8	1.5	2.6	0.6	74.0	3.3	22.7	0.064	0.518	19.977553	-99.437938
T. Izq. Jilotepec	83.75	3	1	39638	4.8	66.7	5.2	7.5	3.0	7.9	1.7	2.7	0.5	71.5	5.2	23.3	0.080	0.522	19.989624	-99.458452
T. Izq. Jilotepec	83.75	3	2	35936	4.9	66.3	5.3	7.4	3.1	8.0	1.6	2.8	0.6	71.2	5.3	23.5	0.066	0.522	19.989961	-99.460589
Lim. Edos. Term. Hgo. Ppia. Méx.	86.00																			
X. C. Libramiento Norte de La Ciudad de México (Cuota)	89.44	3	1	36629	5.3	66.0	5.3	7.0	3.0	7.3	2.3	3.0	0.8	71.3	5.3	23.4	0.087	0.516	20.005679	-99.501744
X. C. Libramiento Norte de La Ciudad de México (Cuota)	89.44	3	2	39260	5.2	66.6	5.2	6.9	2.9	7.2	2.2	2.9	0.9	71.8	5.2	23.0	0.059	0.516	20.003037	-99.497872
T. Der. Palos Altos	97.80	1	1	34755	4.6	68.2	4.2	7.0	2.7	8.2	1.7	2.6	0.8	72.8	4.2	23.0	0.059	0.515	20.024352	-99.532214
T. Der. Palos Altos	97.80	1	2	37193	4.5	68.6	4.1	6.9	2.6	8.1	1.8	2.7	0.7	73.1	4.1	22.8	0.070	0.515	20.034691	-99.557880
X. C. Jilotepec - Maravillas	107.00	1	1	30424	5.3	64.6	4.0	4.4	3.8	11.3	1.7	4.3	0.6	69.9	4.0	26.1	0.076	0.505	20.080814	-99.619565
X. C. Jilotepec - Maravillas	107.00	1	2	31092	5.2	64.6	4.1	4.3	3.9	11.2	1.6	4.4	0.7	69.8	4.1	26.1	0.090	0.505	20.076023	-99.614275
X. C. Jilotepec - Maravillas	107.00	3	1	35296	4.5	57.3	9.1	5.7	2.5	14.2	1.9	3.9	0.9	61.8	9.1	29.1	0.062	0.513	20.082412	-99.635857
X. C. Jilotepec - Maravillas	107.00	3	2	33383	4.6	57.3	9.0	5.8	2.6	14.3	1.8	3.8	0.8	61.9	9.0	29.1	0.081	0.513	20.082545	-99.633639
T. Izq. Aculco	114.80	1	1	35622	5.2	58.3	7.0	5.0	3.0	14.8	1.8	4.1	0.8	63.5	7.0	29.5	0.071	0.513	20.097492	-99.692855
T. Izq. Aculco	114.80	1	2	37653	5.1	58.2	6.9	5.1	3.1	14.8	1.9	4.2	0.7	63.3	6.9	29.8	0.070	0.513	20.091274	-99.686658
T. Izq. Aculco	114.80	3	1	33068	4.7	58.6	7.5	6.5	2.6	12.8	1.9	4.6	0.8	63.3	7.5	29.2	0.078	0.510	20.109956	-99.707256
T. Izq. Aculco	114.80	3	2	34652	4.6	59.4	7.4	6.4	2.5	12.7	1.8	4.5	0.7	64.0	7.4	28.6	0.078	0.510	20.108553	-99.704275
T. Izq. Encinillas	121.70	1	1	33572	5.0	59.6	7.1	5.0	2.5	14.1	2.2	3.7	0.8	64.6	7.1	28.3	0.067	0.516	20.134260	-99.728711
T. Izq. Encinillas	121.70	1	2	35987	4.9	59.4	7.2	5.1	2.4	14.2	2.3	3.6	0.9	64.3	7.2	28.5	0.074	0.516	20.145772	-99.734718
Polotitlán	133.00	1	1	37344	5.4	60.4	7.5	3.9	3.1	12.9	2.4	3.5	0.9	65.8	7.5	26.7	0.064	0.514	20.218615	-99.801690
Polotitlán	133.00	1	2	35140	5.3	61.0	7.4	3.8	3.0	12.8	2.3	3.6	0.8	66.3	7.4	26.3	0.066	0.514	20.220127	-99.803885
Lim. Edos. Term. Méx. Ppia. Qro.	145.50																			
Plaza de Cobro Palmillas	147.92	2	1	20593	0.5	62.6	3.1	5.7	4.2	17.8	1.5	3.6	1.0	63.1	3.1	33.8	0.077	0.500	20.296112	-99.929069

HIDALGO

18 CARR: México - Querétaro (Cuota)

CLAVE: 00411

RUTA: MEX-057-MEX-057D

AÑO: 2025

LUGAR	ESTACION				CLASIFICACION VEHICULAR EN PORCIENTO													COORDENADAS		
	KM	TE	SC	TDPA	M	A	B	C2	C3	T3S2	T3S3	T3S2R4	OTROS	A	B	C	K'	D	LATITUD	LONGITUD
Plaza de Cobro Palmillas	147.92	2	2	20593	0.5	62.6	3.1	5.7	4.2	17.8	1.5	3.6	1.0	63.1	3.1	33.8	0.077	0.500	20.296112	-99.929069
T. Izq. Toluca	148.50	1	1	31729	4.7	61.7	5.1	4.1	3.1	14.5	1.9	4.1	0.8	66.4	5.1	28.5	0.063	0.501	20.287531	-99.913603
T. Izq. Toluca	148.50	1	2	31643	4.6	61.9	5.0	4.0	3.0	14.6	2.0	4.0	0.9	66.5	5.0	28.5	0.062	0.501	20.284618	-99.909280
T. Izq. Toluca	148.50	3	1	36767	1.6	63.9	6.1	6.7	4.0	12.1	2.1	2.6	0.9	65.5	6.1	28.4	0.052	0.507	20.312937	-99.931635
T. Izq. Toluca	148.50	3	2	37954	1.7	64.5	6.0	6.6	3.9	12.0	2.0	2.5	0.8	66.2	6.0	27.8	0.058	0.507	20.320155	-99.934129
T. Der. Portezuelo	151.53	3	1	41721	5.4	60.4	6.8	5.9	2.7	13.4	1.7	3.1	0.6	65.8	6.8	27.4	0.069	0.515	20.336805	-99.941322
T. Der. Portezuelo	151.53	3	2	44638	5.3	60.8	6.9	5.8	2.6	13.3	1.6	3.0	0.7	66.1	6.9	27.0	0.078	0.515	20.336182	-99.941335
T. Der. Poniente San Juan del Río	164.10	3	1	48201	7.4	65.5	5.4	5.3	2.5	8.4	1.3	3.4	0.8	72.9	5.4	21.7	0.067	0.516	20.373858	-99.994415
T. Der. Poniente San Juan del Río	164.10	3	2	51687	6.7	63.9	5.9	5.3	2.8	9.5	1.5	3.5	0.9	70.6	5.9	23.5	0.074	0.516	20.371958	-99.990429
La Estancia	169.40	1	1	54514	5.3	67.7	5.5	4.7	2.9	9.0	1.5	2.5	0.9	73.0	5.5	21.5	0.064	0.519	20.423616	-100.052184
La Estancia	169.40	1	2	59573	5.0	66.6	6.0	5.3	2.3	9.4	1.5	2.9	1.0	71.6	6.0	22.4	0.064	0.519	20.424627	-100.053668
T. Izq. Acámbaro	170.45	3	1	46171	5.1	66.9	5.6	5.4	2.0	10.2	1.3	2.7	0.8	72.0	5.6	22.4	0.068	0.521	20.447708	-100.079273
T. Izq. Acámbaro	170.45	3	2	50750	5.0	64.9	5.7	5.3	2.4	11.9	1.3	2.7	0.8	69.9	5.7	24.4	0.080	0.521	20.449870	-100.082324
T. Izq. El Sauz	176.50	3	1	44655	6.0	65.2	4.3	6.1	2.9	10.1	1.7	2.9	0.8	71.2	4.3	24.5	0.074	0.522	20.477787	-100.110907
T. Izq. El Sauz	176.50	3	2	49266	6.0	66.9	3.5	6.2	2.7	9.7	1.6	2.5	0.9	72.9	3.5	23.6	0.071	0.522	20.497764	-100.133968
T. Der. San Ildefonso	185.30	1	1	47364	4.2	72.0	4.2	6.9	1.1	7.5	1.8	1.5	0.8	76.2	4.2	19.6	0.068	0.536	20.520999	-100.168478
T. Der. San Ildefonso	185.30	1	2	55634	3.8	73.2	4.2	6.4	1.3	7.3	1.7	1.3	0.8	77.0	4.2	18.8	0.072	0.536	20.517352	-100.163871
T. Der. Libramiento Nororiente de Querétaro (Cuota)	192.50	1	1	52291	3.5	74.7	4.2	6.1	1.5	6.5	1.3	1.7	0.5	78.2	4.2	17.6	0.071	0.528	20.552636	-100.215635
T. Der. Libramiento Nororiente de Querétaro (Cuota)	192.50	1	2	59322	3.1	72.9	4.6	7.0	1.7	6.8	1.4	1.9	0.6	76.0	4.6	19.4	0.068	0.528	20.551670	-100.214620
T. Der. Libramiento Nororiente de Querétaro (Cuota)	192.50	3	1	59721	1.9	77.6	2.8	7.9	1.8	4.8	1.7	0.8	0.7	79.5	2.8	17.7	0.069	0.513	20.562649	-100.237209
T. Der. Libramiento Nororiente de Querétaro (Cuota)	192.50	3	2	63486	1.7	75.5	3.0	9.0	1.9	5.3	1.9	0.9	0.8	77.2	3.0	19.8	0.068	0.513	20.561690	-100.234789
T. Der. Libramiento de Querétaro (Blv. Bernardo Quintana)	207.00	1	1	78772	2.2	83.8	1.4	2.8	2.3	4.1	0.6	2.0	0.8	86.0	1.4	12.6	0.071	0.510	20.573484	-100.324051
T. Der. Libramiento de Querétaro (Blv. Bernardo Quintana)	207.00	1	2	82461	1.9	82.6	1.5	3.3	2.6	4.5	0.7	2.0	0.9	84.5	1.5	14.0	0.092	0.510	20.574475	-100.330940
T. Der. Libramiento de Querétaro (Blv. Bernardo Quintana)	207.00	3	1	73667	1.8	82.8	1.8	4.4	1.6	4.5	1.5	0.8	0.8	84.6	1.8	13.6	0.067	0.518	20.578195	-100.380764
T. Der. Libramiento de Querétaro (Blv. Bernardo Quintana)	207.00	3	1	39181	2.1	91.2	0.6	4.0	0.3	0.7	0.6	0.3	0.2	93.3	0.6	6.1	0.076	0.505	20.579404	-100.375490
T. Der. Libramiento de Querétaro (Blv. Bernardo Quintana)	207.00	3	2	40092	2.2	91.0	0.6	4.1	0.3	0.7	0.6	0.3	0.2	93.2	0.6	6.2	0.075	0.505	20.578375	-100.378506
T. Der. Libramiento de Querétaro (Blv. Bernardo Quintana)	207.00	3	2	80072	1.5	81.3	1.9	5.0	1.7	5.2	1.6	0.9	0.9	82.8	1.9	15.3	0.064	0.518	20.578513	-100.378541
Querétaro	211.60																			

19 CARR: Actopan - Progreso

CLAVE: 13038

RUTA: HGO

AÑO: 2025

LUGAR	ESTACION				CLASIFICACION VEHICULAR EN PORCIENTO													COORDENADAS		
	KM	TE	SC	TDPA	M	A	B	C2	C3	T3S2	T3S3	T3S2R4	OTROS	A	B	C	K'	D	LATITUD	LONGITUD
Actopan	0.00	3	1	10463	3.3	91.2	1.0	3.2	0.7	0.3	0.2	0.1	0.0	94.5	1.0	4.5	0.093	0.510	20.266802	-98.954478
Actopan	0.00	3	2	10896	3.0	91.0	1.0	3.5	0.8	0.3	0.3	0.1	0.0	94.0	1.0	5.0	0.089	0.510	20.266387	-98.955033

HIDALGO

19 CARR: Actopan - Progreso

CLAVE: 13038

RUTA: HGO

AÑO: 2025

LUGAR	ESTACION				CLASIFICACION VEHICULAR EN PORCIENTO										COORDENADAS					
	KM	TE	SC	TDPA	M	A	B	C2	C3	T3S2	T3S3	T3S2R4	OTROS	A	B	C	K'	D	LATITUD	LONGITUD
Progreso	23.90	1	1	8300	3.6	90.6	0.8	3.0	0.9	0.5	0.4	0.1	0.1	94.2	0.8	5.0	0.078	0.502	20.245310	-99.175582
Progreso	23.90	1	2	8221	3.5	90.2	0.9	3.2	1.0	0.5	0.4	0.2	0.1	93.7	0.9	5.4	0.082	0.502	20.245182	-99.175562

20 CARR: Cd. Sahagún - Ent. Emiliano Zapata

CLAVE: 13255

RUTA: HGO

AÑO: 2025

LUGAR	ESTACION				CLASIFICACION VEHICULAR EN PORCIENTO										COORDENADAS					
	KM	TE	SC	TDPA	M	A	B	C2	C3	T3S2	T3S3	T3S2R4	OTROS	A	B	C	K'	D	LATITUD	LONGITUD
Cd. Sahagún	0.00	3	1	10513	3.8	84.6	2.1	3.5	2.1	2.1	1.0	0.6	0.2	88.4	2.1	9.5	0.079	0.509	19.763915	-98.587427
Cd. Sahagún	0.00	3	2	10878	4.5	83.0	1.6	4.4	2.0	2.4	1.2	0.7	0.2	87.5	1.6	10.9	0.088	0.509	19.763911	-98.587349
T. Der. Otumba	3.30	3	1	7412	3.8	82.2	1.7	4.0	2.0	3.8	1.1	1.0	0.4	86.0	1.7	12.3	0.086	0.502	19.742782	-98.582602
T. Der. Otumba	3.30	3	2	7352	3.1	82.3	1.5	4.5	2.2	3.6	1.6	0.9	0.3	85.4	1.5	13.1	0.098	0.502	19.742849	-98.582562
Emiliano Zapata	18.00	1	1	4661	2.7	82.6	1.5	6.6	1.5	3.1	1.3	0.6	0.1	85.3	1.5	13.2	0.092	0.505	19.642225	-98.537847
Emiliano Zapata	18.00	1	2	4566	2.9	81.1	1.7	7.4	1.7	2.9	1.3	0.8	0.2	84.0	1.7	14.3	0.091	0.505	19.642298	-98.537707
T. C. Calpulalpan - El Ocote	20.70																			

21 CARR: El Saucillo - Amealco

CLAVE: 13103

RUTA: HGO-103

AÑO: 2025

LUGAR	ESTACION				CLASIFICACION VEHICULAR EN PORCIENTO										COORDENADAS					
	KM	TE	SC	TDPA	M	A	B	C2	C3	T3S2	T3S3	T3S2R4	OTROS	A	B	C	K'	D	LATITUD	LONGITUD
T. C. Portezuelo - Palmillas	0.00	3	0	3794	3.3	89.0	1.4	3.0	0.9	1.1	0.8	0.4	0.1	92.3	1.4	6.3	0.109	0.505	20.313348	-99.715561
Nopala	11.00	1	1	2118	5.0	88.3	1.2	2.4	0.8	0.8	0.9	0.5	0.1	93.3	1.2	5.5	0.106	0.505	20.254212	-99.653311
Nopala	11.00	1	2	2158	5.1	88.6	1.2	2.1	0.7	1.1	0.5	0.5	0.2	93.7	1.2	5.1	0.113	0.505	20.254297	-99.653292
Nopala	11.00	3	0	5678	5.3	86.4	1.3	3.0	1.3	1.3	0.5	0.6	0.3	91.7	1.3	7.0	0.091	0.506	20.245372	-99.635852
Amealco	21.40	1	0	2667	4.7	86.1	1.5	3.7	1.0	1.2	1.1	0.6	0.1	90.8	1.5	7.7	0.128	0.525	20.239312	-99.557908

22 CARR: Ent. Tepeji del Río - Tlahuelilpan

CLAVE: 13017

RUTA: HGO-017

AÑO: 2025

LUGAR	ESTACION				CLASIFICACION VEHICULAR EN PORCIENTO										COORDENADAS					
	KM	TE	SC	TDPA	M	A	B	C2	C3	T3S2	T3S3	T3S2R4	OTROS	A	B	C	K'	D	LATITUD	LONGITUD
T. C. México - Querétaro (Cuota)	0.00																			
T. Izq. Tepeji del Río	3.00	3	1	7933	8.0	79.2	2.5	6.2	1.4	0.5	1.1	0.8	0.3	87.2	2.5	10.3	0.078	0.513	19.940993	-99.339208
T. Izq. Tepeji del Río	3.00	3	2	8362	8.2	79.5	2.4	6.2	1.2	0.5	1.0	0.7	0.3	87.7	2.4	9.9	0.069	0.513	19.940982	-99.339294
Tula de Allende	18.00	1	0	22822	7.7	79.4	1.7	5.5	0.8	2.5	1.3	0.7	0.4	87.1	1.7	11.2	0.067	0.503	20.047695	-99.340263
X. C. Arco Norte de La Ciudad de México	19.40	1	1	11871	8.3	80.6	1.6	3.0	1.3	2.2	1.0	1.6	0.4	88.9	1.6	9.5	0.076	0.517	20.096742	-99.287280
X. C. Arco Norte de La Ciudad de México	19.40	1	2	11102	9.4	78.4	1.8	3.3	1.4	2.4	1.0	1.8	0.5	87.8	1.8	10.4	0.113	0.517	20.096840	-99.287364

HIDALGO

22 CARR: Ent. Tepeji del Río - Tlahuelilpan

CLAVE: 13017

RUTA: HGO-017

AÑO: 2025

LUGAR	ESTACION				CLASIFICACION VEHICULAR EN PORCIENTO													COORDENADAS		
	KM	TE	SC	TDPA	M	A	B	C2	C3	T3S2	T3S3	T3S2R4	OTROS	A	B	C	K'	D	LATITUD	LONGITUD
Tlahuelilpan	32.00	1	1	9940	5.4	84.8	1.5	4.4	1.8	1.1	0.4	0.4	0.2	90.2	1.5	8.3	0.085	0.509	20.125881	-99.246456
Tlahuelilpan	32.00	1	2	9580	5.4	84.9	1.6	4.6	1.6	0.9	0.5	0.3	0.2	90.3	1.6	8.1	0.098	0.509	20.125998	-99.246508

23 CARR: Ent. Tolman - Cd. Sahagún

CLAVE: 00119

RUTA: EM-009-HGO

AÑO: 2025

LUGAR	ESTACION				CLASIFICACION VEHICULAR EN PORCIENTO													COORDENADAS		
	KM	TE	SC	TDPA	M	A	B	C2	C3	T3S2	T3S3	T3S2R4	OTROS	A	B	C	K'	D	LATITUD	LONGITUD
T. C. Venta de Carpio - Tulancingo	0.00	3	0	18355	5.2	88.3	0.7	2.6	1.1	1.0	0.6	0.4	0.1	93.5	0.7	5.8	0.079	0.515	19.714536	-98.791151
Otumba	5.00	3	0	5964	4.1	86.3	1.1	4.2	1.1	1.7	1.0	0.4	0.1	90.4	1.1	8.5	0.080	0.509	19.710485	-98.743202
T. Der. Jaltepec	21.00	3	0	3375	3.3	77.0	3.2	12.2	1.4	1.4	1.0	0.3	0.2	80.3	3.2	16.5	0.069	0.520	19.749524	-98.653621
Lim. Edos. Term. Méx. Ppia. Hgo.	25.00																			
Cd. Sahagún	32.00	1	0	7802	7.8	76.1	1.5	8.1	2.0	1.8	1.6	0.5	0.6	83.9	1.5	14.6	0.077	0.539	19.752526	-98.602830

24 CARR: Francisco I. Madero - Tula de Allende

CLAVE: 13043

RUTA: HGO

AÑO: 2025

LUGAR	ESTACION				CLASIFICACION VEHICULAR EN PORCIENTO													COORDENADAS		
	KM	TE	SC	TDPA	M	A	B	C2	C3	T3S2	T3S3	T3S2R4	OTROS	A	B	C	K'	D	LATITUD	LONGITUD
T. C. Portezuelo - Palmillas	0.00	3	0	5963	12.8	82.0	0.4	2.7	1.0	0.5	0.1	0.4	0.1	94.8	0.4	4.8	0.083	0.502	20.444219	-99.361669
Gral. Pedro María Anaya	38.20	1	0	5497	14.4	80.0	0.9	2.3	0.8	0.7	0.4	0.4	0.1	94.4	0.9	4.7	0.078	0.502	20.162313	-99.364212
T. C. (México - Querétaro) - Tlahuelilpan de Ocampo	52.70	1	0	10943	6.8	88.4	0.7	1.5	1.3	0.5	0.2	0.5	0.1	95.2	0.7	4.1	0.130	0.509	20.068596	-99.331311

25 CARR: Huichapan - Tecozautla

CLAVE: 13030

RUTA: HGO-030

AÑO: 2025

LUGAR	ESTACION				CLASIFICACION VEHICULAR EN PORCIENTO													COORDENADAS		
	KM	TE	SC	TDPA	M	A	B	C2	C3	T3S2	T3S3	T3S2R4	OTROS	A	B	C	K'	D	LATITUD	LONGITUD
Huichapan	0.00	3	0	7870	4.6	85.7	1.5	3.7	1.7	1.1	0.9	0.6	0.2	90.3	1.5	8.2	0.089	0.504	20.383864	-99.659900
Tecozautla	30.85																			

26 CARR: Jilotepec - Maravillas

CLAVE: 00015

RUTA: EM-HGO

AÑO: 2025

LUGAR	ESTACION				CLASIFICACION VEHICULAR EN PORCIENTO													COORDENADAS		
	KM	TE	SC	TDPA	M	A	B	C2	C3	T3S2	T3S3	T3S2R4	OTROS	A	B	C	K'	D	LATITUD	LONGITUD
Jilotepec	0.00	3	0	10927	8.3	86.5	0.4	3.0	0.9	0.2	0.4	0.2	0.1	94.8	0.4	4.8	0.076	0.503	19.955859	-99.558989
X. C. México - Querétaro (Cuota)	21.30	1	0	3364	4.6	87.4	1.3	3.6	1.1	1.0	0.4	0.4	0.2	92.0	1.3	6.7	0.102	0.503	20.080173	-99.632195
X. C. México - Querétaro (Cuota)	21.30	3	0	4577	4.4	87.6	1.7	3.5	1.3	0.7	0.4	0.3	0.1	92.0	1.7	6.3	0.095	0.537	20.093847	-99.626594

HIDALGO

26 CARR: Jilotepec - Maravillas

CLAVE: 00015

RUTA: EM-HGO

AÑO: 2025

LUGAR	ESTACION				CLASIFICACION VEHICULAR EN PORCIENTO														COORDENADAS	
	KM	TE	SC	TDPA	M	A	B	C2	C3	T3S2	T3S3	T3S2R4	OTROS	A	B	C	K'	D	LATITUD	LONGITUD
Acazuchitlán	29.00	1	0	2994	4.6	87.2	1.6	3.0	1.8	0.8	0.6	0.3	0.1	91.8	1.6	6.6	0.098	0.534	20.139000	-99.602662
Lim. Edos. Term. Méx. Ppia. Hgo.	29.30																			
Maravillas	36.40	1	0	2107	3.1	89.4	2.1	3.1	1.2	0.8	0.1	0.2	0.0	92.5	2.1	5.4	0.155	0.562	20.198188	-99.584478
T. C. El Saucillo - Amealco	40.00	1	0	3771	4.5	87.9	1.2	4.4	0.8	0.5	0.4	0.2	0.1	92.4	1.2	6.4	0.129	0.507	20.231581	-99.594541

27 CARR: Libramiento de Atotonilco El Grande

CLAVE: 13238

RUTA: HGO

AÑO: 2025

LUGAR	ESTACION				CLASIFICACION VEHICULAR EN PORCIENTO														COORDENADAS	
	KM	TE	SC	TDPA	M	A	B	C2	C3	T3S2	T3S3	T3S2R4	OTROS	A	B	C	K'	D	LATITUD	LONGITUD
T. C. Pachuca - Tempoal (1er. Acceso)	0.00	3	1	4626	1.8	89.6	1.5	3.0	2.3	0.8	0.8	0.2	0.0	91.4	1.5	7.1	0.096	0.524	20.273097	-98.646830
T. C. Pachuca - Tempoal (1er. Acceso)	0.00	3	2	5098	1.8	90.0	1.4	2.4	2.4	1.1	0.8	0.1	0.0	91.8	1.4	6.8	0.109	0.524	20.273201	-98.646961
T. C. Pachuca - Tempoal (2do. Acceso)	6.30	1	1	5088	2.4	89.8	1.7	2.2	2.3	0.6	0.8	0.2	0.0	92.2	1.7	6.1	0.095	0.526	20.295400	-98.665320
T. C. Pachuca - Tempoal (2do. Acceso)	6.30	1	2	5644	1.9	89.5	1.2	3.3	2.2	1.1	0.7	0.1	0.0	91.4	1.2	7.4	0.104	0.526	20.295298	-98.665700

28 CARR: Lolotla - Atlapexco

CLAVE: 13238

RUTA: HGO

AÑO: 2025

LUGAR	ESTACION				CLASIFICACION VEHICULAR EN PORCIENTO														COORDENADAS	
	KM	TE	SC	TDPA	M	A	B	C2	C3	T3S2	T3S3	T3S2R4	OTROS	A	B	C	K'	D	LATITUD	LONGITUD
T. C. Pachuca - Tempoal	0.00	3	0	1421	5.8	86.6	0.9	3.2	1.4	1.4	0.3	0.4	0.0	92.4	0.9	6.7	0.084	0.510	20.875688	-98.703094
Atlapexco	68.00	1	0	4202	5.9	87.6	0.3	3.9	0.7	1.2	0.2	0.2	0.0	93.5	0.3	6.2	0.093	0.505	21.015408	-98.351856
T. C. Álamo - Huejutla de Reyes	69.80																			

29 CARR: Los Reyes - El Tephé

CLAVE: 00021

RUTA: EM-HGO

AÑO: 2025

LUGAR	ESTACION				CLASIFICACION VEHICULAR EN PORCIENTO														COORDENADAS	
	KM	TE	SC	TDPA	M	A	B	C2	C3	T3S2	T3S3	T3S2R4	OTROS	A	B	C	K'	D	LATITUD	LONGITUD
T. C. México - Pachuca (Libre)	0.00																			
Los Reyes	1.35	3	1	9614	6.6	85.5	0.4	5.8	0.5	0.6	0.3	0.3	0.0	92.1	0.4	7.5	0.082	0.504	19.769181	-98.995199
Los Reyes	1.35	3	2	9477	5.7	87.0	0.4	5.6	0.4	0.4	0.2	0.3	0.0	92.7	0.4	6.9	0.076	0.504	19.769115	-98.995231
Zumpango	15.35	1	1	13449	13.1	82.5	0.3	1.6	1.7	0.4	0.1	0.2	0.1	95.6	0.3	4.1	0.083	0.502	19.792391	-99.073940
Zumpango	15.35	1	2	13539	13.6	81.7	0.3	1.7	1.9	0.4	0.1	0.2	0.1	95.3	0.3	4.4	0.082	0.502	19.792514	-99.075019
Zumpango	15.35	3	0	19815	7.7	82.9	0.6	4.4	1.7	1.5	0.6	0.5	0.1	90.6	0.6	8.8	0.068	0.505	19.820641	-99.115169
Tequixquiác	29.00	1	0	10714	12.1	78.0	1.4	4.0	1.7	1.4	0.6	0.6	0.2	90.1	1.4	8.5	0.072	0.504	19.882477	-99.137153
Apaxco	39.00	3	1	5586	9.6	80.4	0.6	3.4	2.2	2.0	1.2	0.5	0.1	90.0	0.6	9.4	0.104	0.502	19.983208	-99.178941
Apaxco	39.00	3	2	5539	9.3	80.4	0.5	3.2	2.4	1.8	1.9	0.4	0.1	89.7	0.5	9.8	0.087	0.502	19.983166	-99.179005

HIDALGO

29 CARR: Los Reyes - El Tephé

CLAVE: 00021

RUTA: EM-HGO

AÑO: 2025

LUGAR	ESTACION				CLASIFICACION VEHICULAR EN PORCIENTO													COORDENADAS			
	KM	TE	SC	TDPA	M	A	B	C2	C3	T3S2	T3S3	T3S2R4	OTROS	A	B	C	K'	D	LATITUD	LONGITUD	
Lim. Edos. Term. Méx. Ppia. Hgo.	40.00																				
T. Izq. Atotonilco (1° Acceso)	42.00	1	0	11150	11.5	75.0	0.5	3.2	3.3	2.1	3.1	1.0	0.3	86.5	0.5	13.0	0.073	0.503	19.990533	-99.184740	
X. C. Arco Norte de La Ciudad de México	50.00	3	1	7214	9.0	80.6	1.1	4.4	1.5	1.4	0.8	0.7	0.5	89.6	1.1	9.3	0.092	0.516	20.069601	-99.220605	
X. C. Arco Norte de La Ciudad de México	50.00	3	2	7699	9.2	80.6	1.0	4.6	1.3	1.2	0.8	0.8	0.5	89.8	1.0	9.2	0.074	0.516	20.069594	-99.220678	
Tlaxcoapan	52.00	3	1	4613	15.0	78.5	1.2	3.3	0.8	0.4	0.1	0.5	0.2	93.5	1.2	5.3	0.084	0.510	20.103311	-99.221591	
Tlaxcoapan	52.00	3	2	4441	15.6	78.3	1.1	3.0	0.6	0.3	0.1	0.8	0.2	93.9	1.1	5.0	0.080	0.510	20.103310	-99.221673	
Tlahuelilpan	60.00	3	1	10871	11.8	79.8	1.0	3.5	1.4	1.3	0.5	0.5	0.2	91.6	1.0	7.4	0.072	0.503	20.149975	-99.234172	
Tlahuelilpan	60.00	3	2	10753	11.7	81.0	1.3	3.5	0.9	0.7	0.5	0.3	0.1	92.7	1.3	6.0	0.090	0.503	20.149978	-99.234263	
Progreso	72.00	1	1	12858	14.1	80.4	0.8	2.1	1.5	0.5	0.3	0.2	0.1	94.5	0.8	4.7	0.070	0.514	20.236796	-99.195701	
Progreso	72.00	1	2	13603	14.1	79.6	0.9	2.7	1.7	0.5	0.2	0.2	0.1	93.7	0.9	5.4	0.070	0.514	20.236721	-99.195705	
El Tephé	97.00	1	0	9575	7.3	83.1	0.7	4.2	1.9	1.6	0.9	0.2	0.1	90.4	0.7	8.9	0.090	0.521	20.434858	-99.172151	

30 CARR: Otumba - Tizayuca

CLAVE: 00012

RUTA: EM-HGO

AÑO: 2025

LUGAR	ESTACION				CLASIFICACION VEHICULAR EN PORCIENTO													COORDENADAS		
	KM	TE	SC	TDPA	M	A	B	C2	C3	T3S2	T3S3	T3S2R4	OTROS	A	B	C	K'	D	LATITUD	LONGITUD
Otumba	0.00	3	0	4487	7.0	91.4	0.2	0.8	0.3	0.1	0.1	0.1	0.0	98.4	0.2	1.4	0.079	0.510	19.712366	-98.757990
X. C. Venta de Carpio - Tulancingo	6.00	3	1	2921	8.3	88.3	0.2	1.3	1.0	0.5	0.3	0.1	0.0	96.6	0.2	3.2	0.145	0.503	19.764859	-98.762193
X. C. Venta de Carpio - Tulancingo	6.00	3	2	2956	7.3	89.4	0.2	1.5	0.8	0.4	0.3	0.1	0.0	96.7	0.2	3.1	0.127	0.503	19.755588	-98.756799
Temascalapa	26.50	3	1	3569	13.2	81.5	0.4	2.6	1.2	0.7	0.2	0.2	0.0	94.7	0.4	4.9	0.090	0.517	19.830313	-98.914216
Temascalapa	26.50	3	2	3826	13.8	80.8	0.4	2.7	1.1	0.8	0.2	0.2	0.0	94.6	0.4	5.0	0.105	0.517	19.830208	-98.914221
Lim. Edos. Term. Méx. Ppia. Hgo.	29.00																			
Tizayuca	37.10	1	1	9081	9.8	83.8	0.5	2.7	0.9	0.9	0.2	0.9	0.3	93.6	0.5	5.9	0.073	0.531	19.839256	-98.967313
Tizayuca	37.10	1	2	8008	10.1	83.1	0.5	3.0	0.7	1.1	0.3	0.9	0.3	93.2	0.5	6.3	0.081	0.531	19.839161	-98.967331

31 CARR: Ramal a El Chico

CLAVE: 13256

RUTA: HGO

AÑO: 2025

LUGAR	ESTACION				CLASIFICACION VEHICULAR EN PORCIENTO													COORDENADAS		
	KM	TE	SC	TDPA	M	A	B	C2	C3	T3S2	T3S3	T3S2R4	OTROS	A	B	C	K'	D	LATITUD	LONGITUD
T. C. Pachuca - Tempoal	0.00	3	0	3454	4.2	89.4	0.9	3.1	0.3	1.8	0.1	0.2	0.0	93.6	0.9	5.5	0.083	0.518	20.139851	-98.724140
Mineral El Chico	21.00	1	0	1703	3.4	93.5	0.2	2.0	0.1	0.2	0.3	0.3	0.0	96.9	0.2	2.9	0.158	0.503	20.209686	-98.727854

HIDALGO

32 CARR: Ramal a Pachuca

CLAVE: 13254

RUTA: HGO

AÑO: 2025

LUGAR	ESTACION				CLASIFICACION VEHICULAR EN PORCIENTO													COORDENADAS		
	KM	TE	SC	TDPA	M	A	B	C2	C3	T3S2	T3S3	T3S2R4	OTROS	A	B	C	K'	D	LATITUD	LONGITUD
T. C. Colonia - Portezuelo	0.00	3	1	19823	2.1	92.1	0.6	3.5	0.8	0.4	0.2	0.2	0.1	94.2	0.6	5.2	0.093	0.502	20.123169	-98.815484
T. C. Colonia - Portezuelo	0.00	3	2	19986	2.1	92.2	0.5	3.6	0.8	0.3	0.2	0.2	0.1	94.3	0.5	5.2	0.089	0.502	20.123274	-98.815542
Pachuca	10.00																			

33 CARR: San Alejo - Huayacocotla

CLAVE: 00132

RUTA: HGO-051-VER-113

AÑO: 2025

LUGAR	ESTACION				CLASIFICACION VEHICULAR EN PORCIENTO													COORDENADAS		
	KM	TE	SC	TDPA	M	A	B	C2	C3	T3S2	T3S3	T3S2R4	OTROS	A	B	C	K'	D	LATITUD	LONGITUD
T. C. Pachuca - Tuxpam	0.00	3	0	8027	6.1	82.5	1.5	6.2	1.4	0.8	0.5	0.8	0.2	88.6	1.5	9.9	0.076	0.501	20.154229	-98.286398
Metepec	11.80	3	0	4046	14.8	79.8	0.5	2.8	0.9	0.6	0.4	0.2	0.0	94.6	0.5	4.9	0.086	0.502	20.243438	-98.331228
Agua Blanca	29.48	3	0	4637	4.0	81.8	2.5	6.9	3.1	0.8	0.2	0.6	0.1	85.8	2.5	11.7	0.095	0.503	20.354188	-98.361140
Lim. Edos. Term. Hgo. Ppia. Ver.	36.48																			
Huayacocotla	66.00	1	0	2330	8.2	85.5	0.4	3.3	1.0	0.6	0.5	0.3	0.2	93.7	0.4	5.9	0.101	0.545	20.527605	-98.493246

34 CARR: San Felipe Orizatlán - Huejutla de Reyes

CLAVE: 13258

RUTA: HGO

AÑO: 2025

LUGAR	ESTACION				CLASIFICACION VEHICULAR EN PORCIENTO													COORDENADAS		
	KM	TE	SC	TDPA	M	A	B	C2	C3	T3S2	T3S3	T3S2R4	OTROS	A	B	C	K'	D	LATITUD	LONGITUD
San Felipe Orizatlán	0.00	3	0	4238	19.3	73.4	1.1	3.6	1.3	0.6	0.2	0.3	0.2	92.7	1.1	6.2	0.097	0.504	21.171929	-98.591162
Huejutla de Reyes	25.00	1	0	2870	20.5	73.9	0.1	0.4	4.6	0.3	0.1	0.1	0.0	94.4	0.1	5.5	0.078	0.502	21.125717	-98.467650

35 CARR: Santo Domingo - T. C. (México - Querétaro)

CLAVE: 00433

RUTA: EM-011-HGO

AÑO: 2025

LUGAR	ESTACION				CLASIFICACION VEHICULAR EN PORCIENTO													COORDENADAS		
	KM	TE	SC	TDPA	M	A	B	C2	C3	T3S2	T3S3	T3S2R4	OTROS	A	B	C	K'	D	LATITUD	LONGITUD
T. C. Toluca - Palmillas	0.00	3	0	11588	1.8	87.9	0.5	7.6	0.8	0.9	0.4	0.1	0.0	89.7	0.5	9.8	0.086	0.509	19.624155	-99.772101
X. C. Los Reyes - Ixtlahuaca	6.11	3	0	10358	2.9	88.5	1.5	4.3	1.1	1.1	0.5	0.1	0.0	91.4	1.5	7.1	0.093	0.506	19.658952	-99.723720
X. C. Villa del Carbón - Atlacomulco	23.94	3	1	3142	3.2	86.9	1.7	4.4	1.3	1.6	0.8	0.1	0.0	90.1	1.7	8.2	0.099	0.502	19.786247	-99.702088
X. C. Villa del Carbón - Atlacomulco	23.94	3	2	3119	3.7	86.1	2.2	4.0	1.7	1.5	0.6	0.2	0.0	89.8	2.2	8.0	0.107	0.502	19.786245	-99.702186
T. Der. Chapa de Mota	42.70	1	1	10077	5.5	86.7	1.3	3.8	1.0	0.9	0.3	0.4	0.1	92.2	1.3	6.5	0.096	0.541	19.926117	-99.582228
T. Der. Chapa de Mota	42.70	1	2	8557	5.9	84.6	1.7	4.9	1.2	1.0	0.2	0.4	0.1	90.5	1.7	7.8	0.081	0.541	19.926189	-99.582287
Lim. Edos. Term. Méx. Ppia. Hgo.	63.34																			
T. C. México - Querétaro (Cuota)	65.84	1	1	5385	2.4	89.0	1.5	3.9	1.3	0.9	0.3	0.4	0.3	91.4	1.5	7.1	0.105	0.514	19.971184	-99.451111
T. C. México - Querétaro (Cuota)	65.84	1	2	5088	2.5	87.9	1.7	4.1	1.3	1.3	0.4	0.4	0.4	90.4	1.7	7.9	0.107	0.514	19.971242	-99.451149

HIDALGO

36 CARR: T. C. (Los Reyes - El Tephé) - Tizayuca

CLAVE: 00014

RUTA: EM-HGO

AÑO: 2025

LUGAR	ESTACION				CLASIFICACION VEHICULAR EN PORCIENTO										COORDENADAS					
	KM	TE	SC	TDPA	M	A	B	C2	C3	T3S2	T3S3	T3S2R4	OTROS	A	B	C	K'	D	LATITUD	LONGITUD
T. C. Los Reyes - El Tephé	0.00	3	0	7571	11.7	78.5	0.7	1.5	3.7	2.2	0.9	0.8	0.0	90.2	0.7	9.1	0.068	0.509	19.784008	-99.025884
Lim. Edos. Term. Méx. Ppia. Hgo.	6.50																			
Tizayuca	8.00	1	0	10642	9.9	77.4	0.6	3.8	0.7	5.7	1.5	0.4	0.0	87.3	0.6	12.1	0.089	0.502	19.825530	-98.990997

37 CARR: Tepeji del Río - T.C. (México - Querétaro)

CLAVE: 13104

RUTA: HGO

AÑO: 2025

LUGAR	ESTACION				CLASIFICACION VEHICULAR EN PORCIENTO										COORDENADAS					
	KM	TE	SC	TDPA	M	A	B	C2	C3	T3S2	T3S3	T3S2R4	OTROS	A	B	C	K'	D	LATITUD	LONGITUD
T. C. Ent. Tepeji del Río - Tlahuelilpan de Ocampo	0.00	3	0	8223	6.5	85.0	0.8	4.8	0.7	1.1	0.6	0.4	0.1	91.5	0.8	7.7	0.072	0.501	19.943864	-99.342022
T. C. México - Querétaro	12.40	1	0	4077	4.3	83.0	2.1	5.2	1.6	1.3	1.0	1.1	0.4	87.3	2.1	10.6	0.073	0.503	19.977388	-99.435614

38 CARR: Tlahuelilpan - San Agustín Tlaxiaca

CLAVE: 13435

RUTA: HGO

AÑO: 2025

LUGAR	ESTACION				CLASIFICACION VEHICULAR EN PORCIENTO										COORDENADAS					
	KM	TE	SC	TDPA	M	A	B	C2	C3	T3S2	T3S3	T3S2R4	OTROS	A	B	C	K'	D	LATITUD	LONGITUD
Tlahuelilpan	0.00	3	0	4051	11.8	80.9	0.2	6.0	0.5	0.3	0.1	0.2	0.0	92.7	0.2	7.1	0.096	0.510	20.136768	-99.226340
Ignacio Zaragoza	25.50	3	0	3103	3.4	84.8	0.7	9.6	1.2	0.1	0.1	0.1	0.0	88.2	0.7	11.1	0.091	0.503	20.130752	-98.995188
T. C. (La Colonia - Portezuelo)	48.00	1	0	6164	3.6	89.8	0.8	4.1	0.9	0.5	0.1	0.1	0.1	93.4	0.8	5.8	0.090	0.508	20.120569	-98.906530

39 CARR: Tlaxco - Tejocotal (Cuota)

CLAVE: 00209

RUTA: PUE-TLAX-HGO-D

AÑO: 2025

LUGAR	ESTACION				CLASIFICACION VEHICULAR EN PORCIENTO										COORDENADAS					
	KM	TE	SC	TDPA	M	A	B	C2	C3	T3S2	T3S3	T3S2R4	OTROS	A	B	C	K'	D	LATITUD	LONGITUD
T.C. Apan - Tlaxco	23.00	3	0	5750	1.8	85.9	3.3	3.4	1.7	2.1	1.0	0.7	0.1	87.7	3.3	9.0	0.105	0.718	19.607087	-98.156663
Lim. Edos. Term. Tlax. Ppia. Pue.	30.70																			
Ent. Chignahuapan	56.20	3	0	3948	2.2	85.0	2.6	3.6	2.2	2.1	1.2	1.1	0.0	87.2	2.6	10.2	0.096	0.524	19.870773	-98.061055
Lim. Edos. Term. Pue. Ppia. Hgo.	84.80																			
T. C. Apizaco - Tejocotal	85.60																			

40 CARR: Calpulalpan - El Ocote

CLAVE: 00054

RUTA: MEX-HGO

AÑO: 2025

LUGAR	ESTACION				CLASIFICACION VEHICULAR EN PORCIENTO										COORDENADAS					
	KM	TE	SC	TDPA	M	A	B	C2	C3	T3S2	T3S3	T3S2R4	OTROS	A	B	C	K'	D	LATITUD	LONGITUD
Calpulalpan	0.00	3	0	8305	3.7	77.7	3.0	7.6	1.8	4.0	1.2	0.8	0.2	81.4	3.0	15.6	0.095	0.523	19.611292	-98.557724
X. C. Arco Norte de La Ciudad de México	4.00	3	1	4097	4.1	79.8	2.1	4.8	1.8	4.4	1.4	1.2	0.4	83.9	2.1	14.0	0.082	0.504	19.626331	-98.542524

HIDALGO

40 CARR: Calpulalpan - El Ocote

CLAVE: 00054

RUTA: MEX-HGO

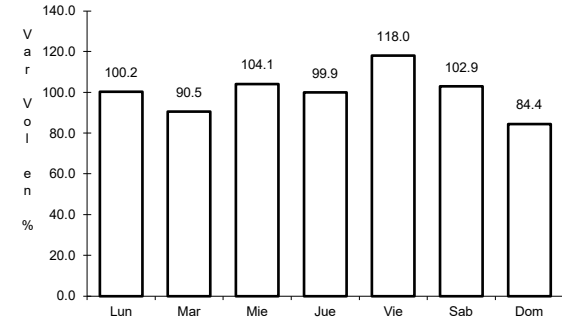
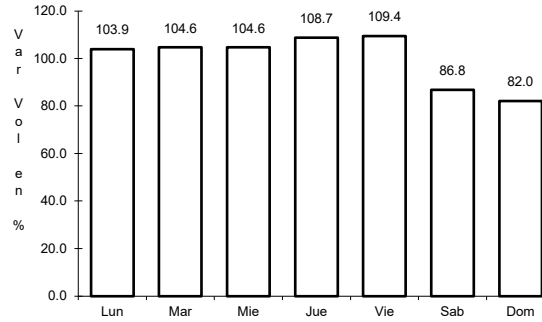
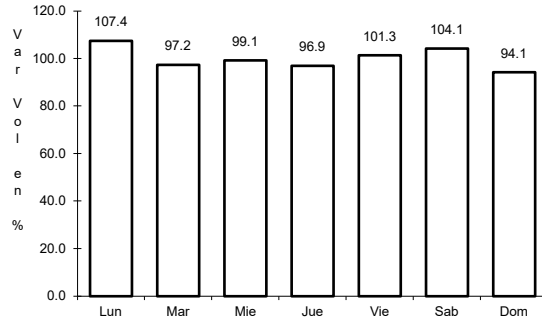
AÑO: 2025

LUGAR	ESTACION				CLASIFICACION VEHICULAR EN PORCIENTO										COORDENADAS					
	KM	TE	SC	TDPA	M	A	B	C2	C3	T3S2	T3S3	T3S2R4	OTROS	A	B	C	K'	D	LATITUD	LONGITUD
X. C. Arco Norte de La Ciudad de México	4.00	3	2	4033	3.8	79.2	1.8	5.1	2.1	4.5	1.7	1.4	0.4	83.0	1.8	15.2	0.084	0.504	19.626396	-98.542612
Lim. Edos. Term. Tlax. Ppia. Hgo.	5.00																			
Apan	19.58	3	1	4308	5.9	85.1	1.1	6.2	1.0	0.4	0.1	0.2	0.0	91.0	1.1	7.9	0.079	0.508	19.728898	-98.471409
Apan	19.58	3	2	4181	6.1	85.0	1.2	6.0	1.1	0.4	0.1	0.1	0.0	91.1	1.2	7.7	0.083	0.508	19.728899	-98.471410
Tepeapulco	34.92	3	0	5047	3.4	89.8	0.6	2.8	1.7	1.2	0.3	0.2	0.0	93.2	0.6	6.2	0.090	0.501	19.802932	-98.563276
X. C. Venta de Carpio - Tulancingo	51.18	1	1	1452	3.1	88.7	0.5	4.1	2.5	0.7	0.3	0.1	0.0	91.8	0.5	7.7	0.086	0.525	19.919207	-98.577627
X. C. Venta de Carpio - Tulancingo	51.18	1	2	1316	3.0	88.3	0.5	4.4	2.6	0.8	0.3	0.1	0.0	91.3	0.5	8.2	0.088	0.525	19.918474	-98.576645
X. C. Venta de Carpio - Tulancingo	51.18	3	0	2375	5.1	87.0	1.0	3.2	1.3	2.2	0.1	0.1	0.0	92.1	1.0	6.9	0.091	0.516	19.932095	-98.585122
El Ocote	70.44	1	1	2107	2.7	94.9	0.2	1.6	0.4	0.2	0.0	0.0	0.0	97.6	0.2	2.2	0.092	0.501	20.040317	-98.621950
El Ocote	70.44	1	2	2095	2.6	94.9	0.2	1.7	0.4	0.2	0.0	0.0	0.0	97.5	0.2	2.3	0.094	0.501	20.041334	-98.621394

1 CARR: Álamo - Huejutla de Reyes

CLAVE: 00116

ruta: MEX-127



Km: 0.00 Tipo: 3 Sent: 0

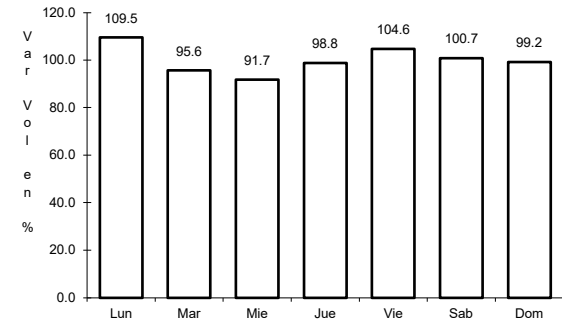
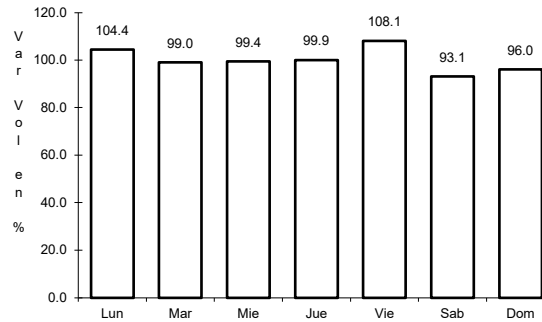
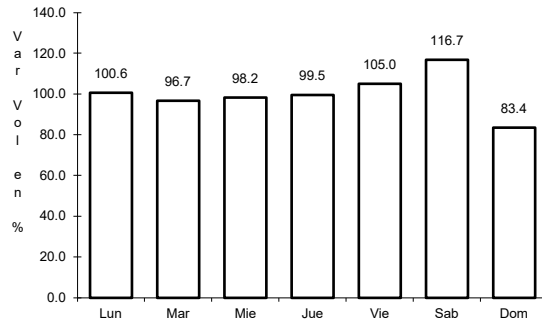
Km: 73.00 Tipo: 1 Sent: 0

Km: 78.00 Tipo: 3 Sent: 0

2 CARR: Apizaco - Tejocotal

CLAVE: 00430

ruta: MEX-119



Km: 0.00 Tipo: 3 Sent: 1

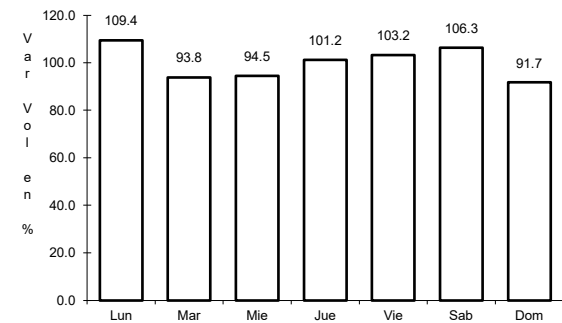
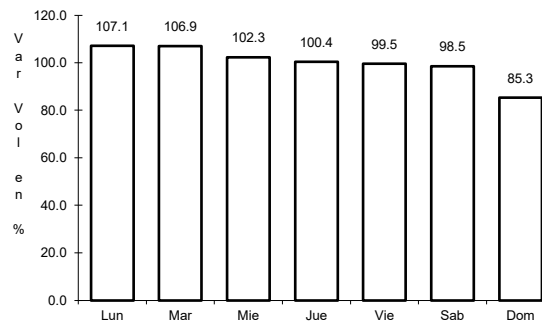
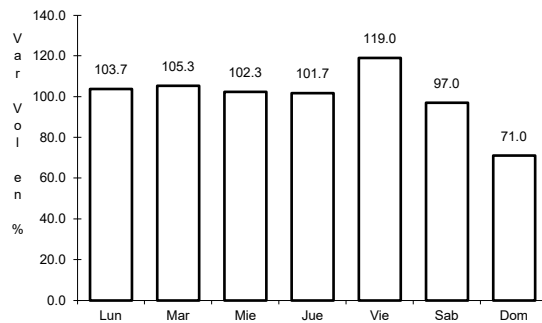
Km: 0.00 Tipo: 3 Sent: 2

Km: 113.15 Tipo: 1 Sent: 0

3 CARR: Ent. Colonia - Portezuelo

CLAVE: 13257

ruta: MEX-085



Km: 0.00 Tipo: 3 Sent: 1

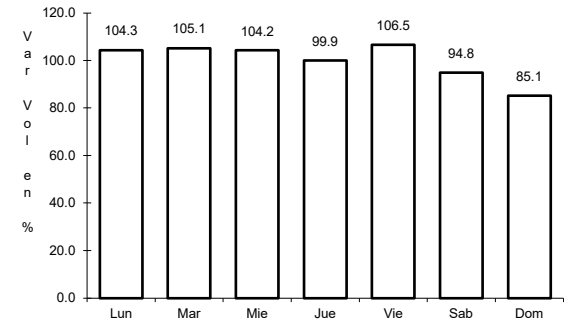
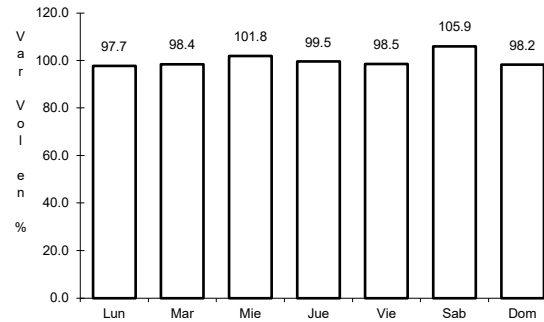
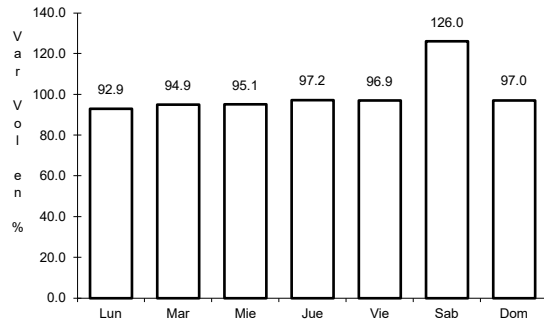
Km: 0.00 Tipo: 3 Sent: 2

Km: 75.20 Tipo: 3 Sent: 1

4 CARR: Ent. Jorobas - Tula

CLAVE: 00159

ruta: MEX-087



Km: 0.00                      Tipo: 3                      Sent: 1

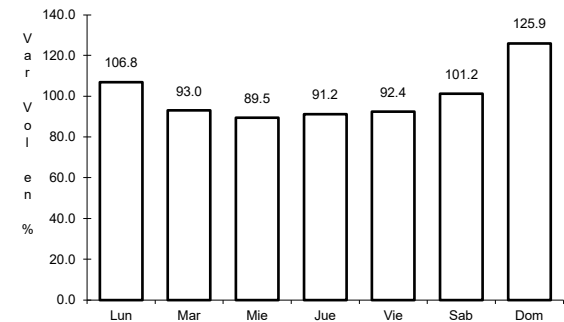
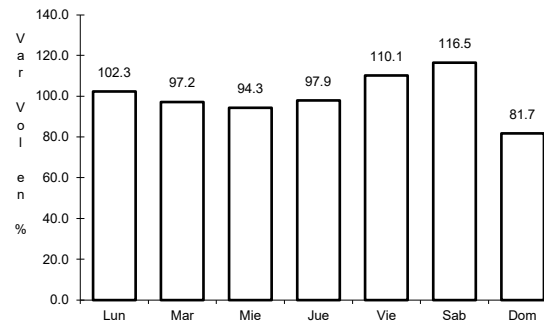
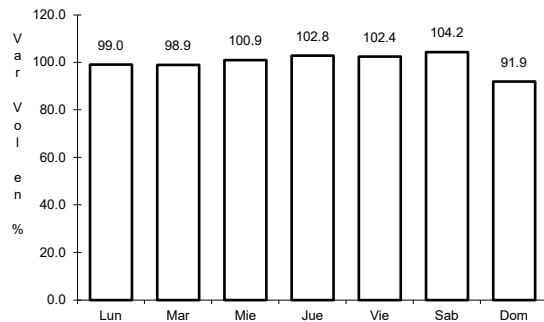
Km: 0.00                      Tipo: 3                      Sent: 2

Km: 37.70                      Tipo: 1                      Sent: 1

5 CARR: Libramiento de Huichapan

CLAVE:

ruta: MEX-045



Km: 2.00                      Tipo: 1                      Sent: 1

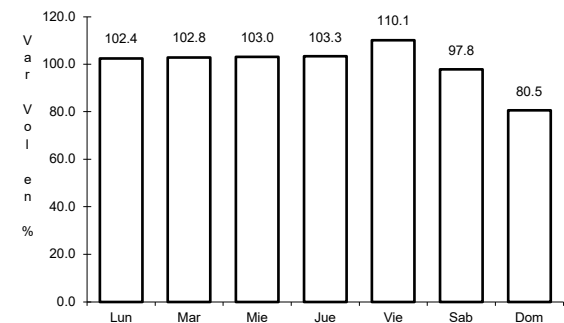
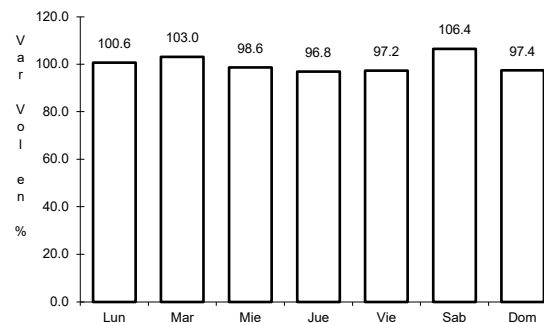
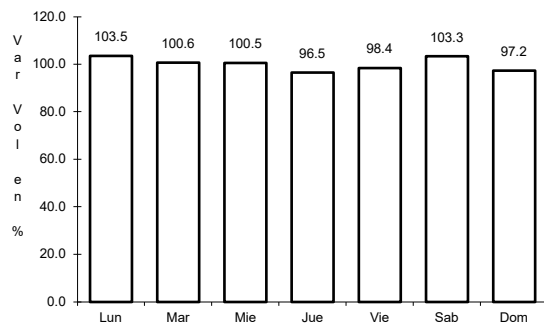
Km: 2.00                      Tipo: 1                      Sent: 2

Km: 9.00                      Tipo: 1                      Sent: 1

6 CARR: México - Pachuca (Libre)

CLAVE: 00431

ruta: MEX-085



Km: 26.93                      Tipo: 1                      Sent: 1

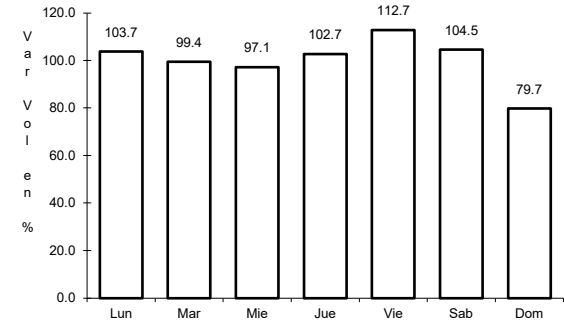
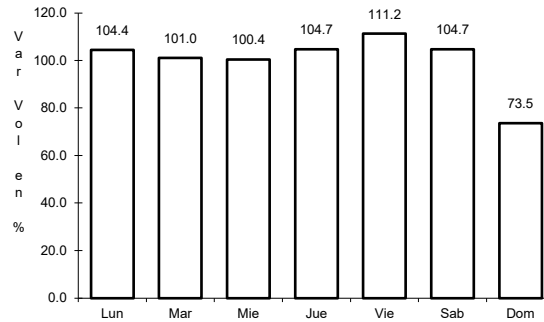
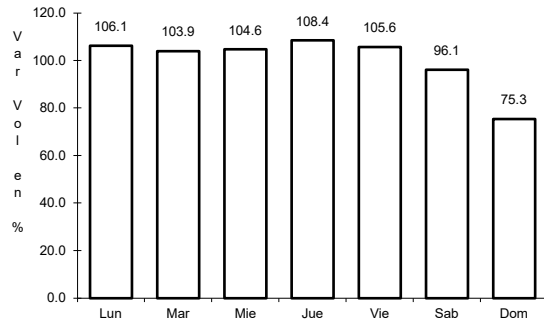
Km: 26.93                      Tipo: 1                      Sent: 2

Km: 86.50                      Tipo: 1                      Sent: 1

7 CARR: Pachuca - Cd. Sahagún

CLAVE: 13088

ruta: MEX-105



Km: 0.00

Tipo: 3

Sent: 1

Km: 0.00

Tipo: 3

Sent: 2

Km: 40.00

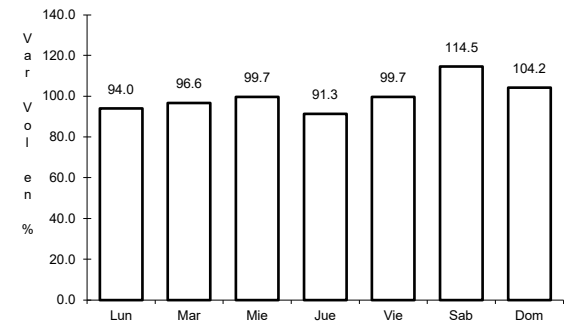
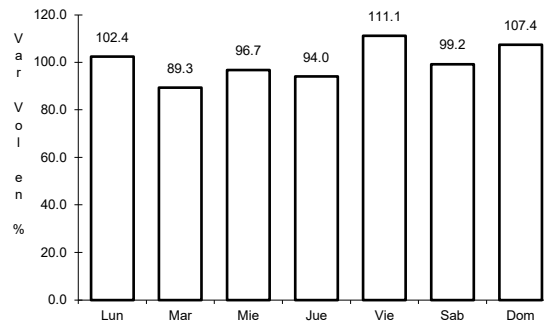
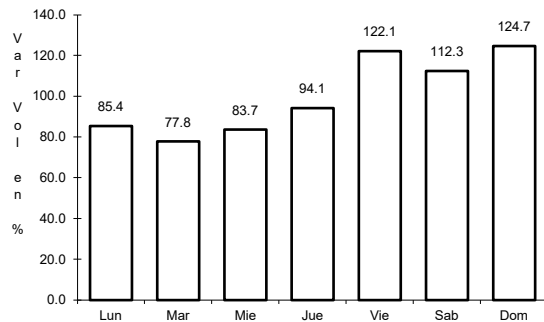
Tipo: 3

Sent: 1

8 CARR: Pachuca - Templo

CLAVE: 00113

ruta: MEX-105



Km: 0.00

Tipo: 3

Sent: 0

Km: 129.80

Tipo: 1

Sent: 0

Km: 260.68

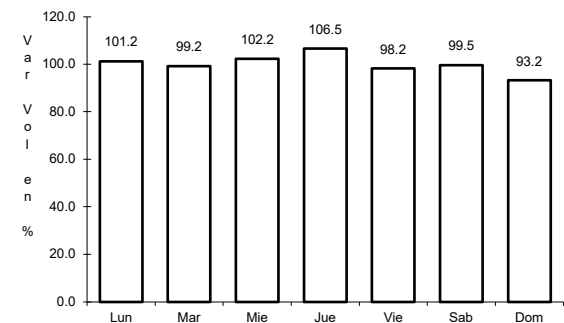
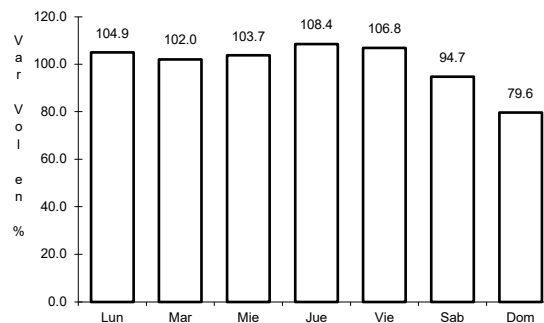
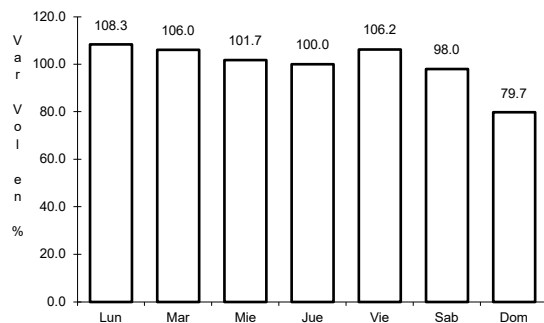
Tipo: 1

Sent: 0

9 CARR: Pachuca - Tuxpam

CLAVE: 00608

ruta: MEX-130



Km: 2.60

Tipo: 3

Sent: 1

Km: 2.60

Tipo: 3

Sent: 2

Km: 232.50

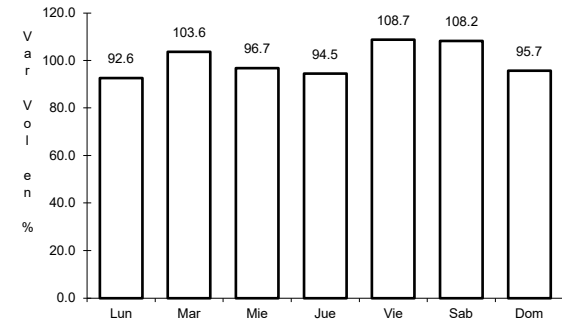
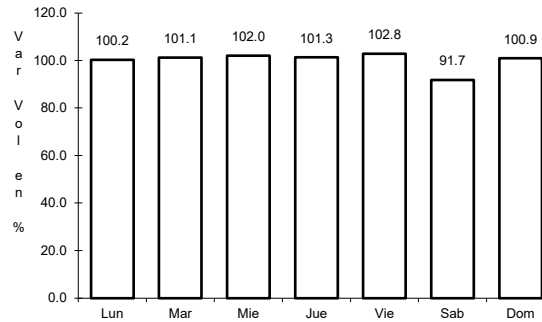
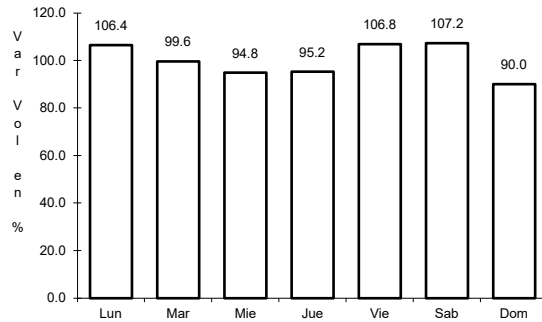
Tipo: 1

Sent: 0

10 CARR: Portezuelo - Cd. Valles

CLAVE: 00023

ruta: MEX-085



Km: 81.37      Tipo: 3      Sent: 0

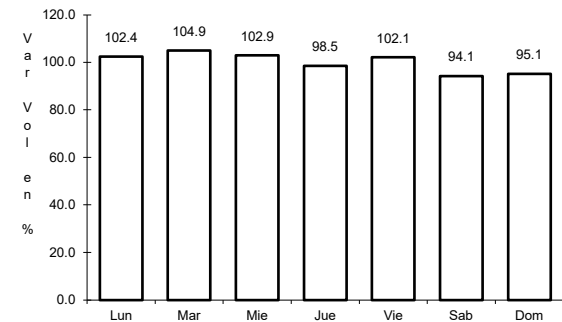
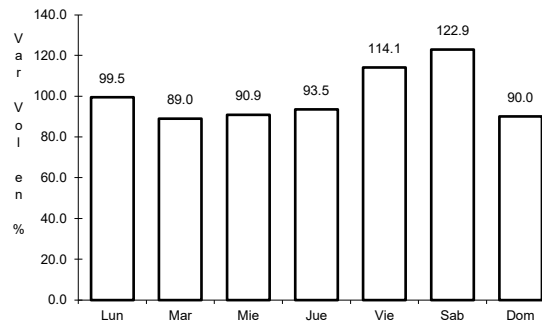
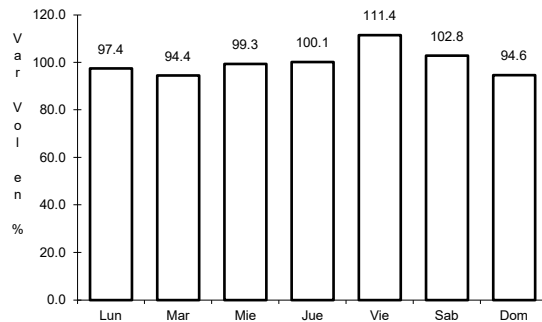
Km: 236.00      Tipo: 3      Sent: 0

Km: 368.00      Tipo: 1      Sent: 1

11 CARR: Portezuelo - Palmillas

CLAVE: 00194

ruta: MEX-045



Km: 0.00      Tipo: 3      Sent: 1

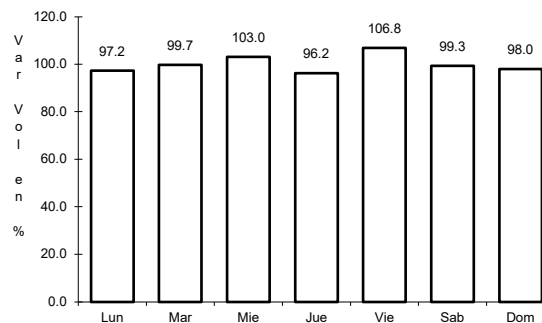
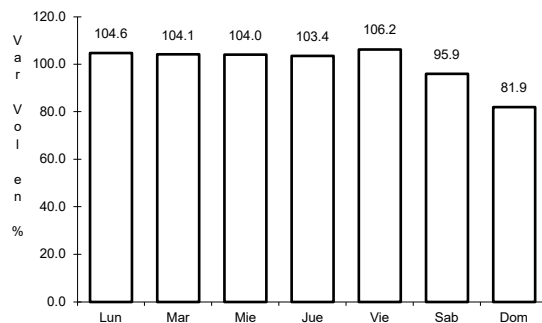
Km: 0.00      Tipo: 3      Sent: 2

Km: 80.00      Tipo: 1      Sent: 1

12 CARR: Tamazunchale - San Felipe Orizatlán

CLAVE: 00609

ruta: MEX-085



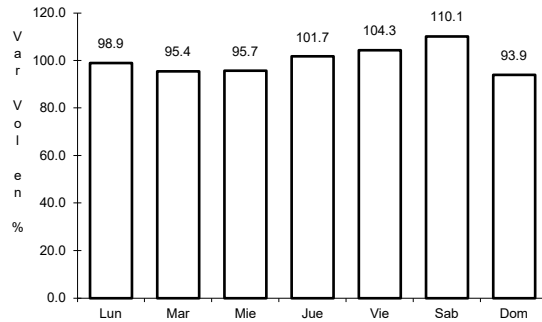
Km: 0.00      Tipo: 3      Sent: 0

Km: 27.10      Tipo: 1      Sent: 0

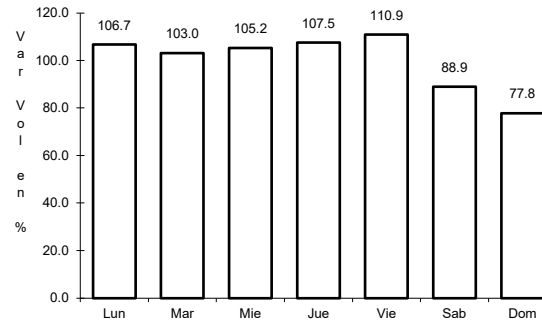
13 CARR: Venta de Carpio - T. C. (Pachuca - Tuxpam)

CLAVE: 00455

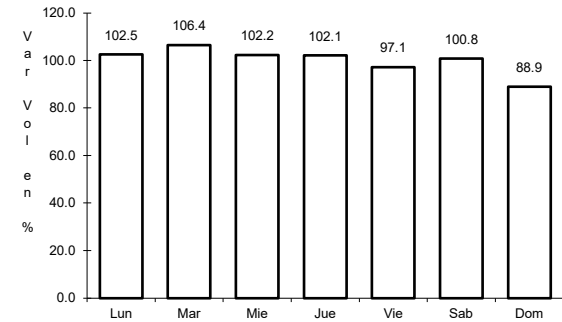
ruta: MEX-132



Km: 6.42 Tipo: 3 Sent: 1



Km: 6.42 Tipo: 3 Sent: 2

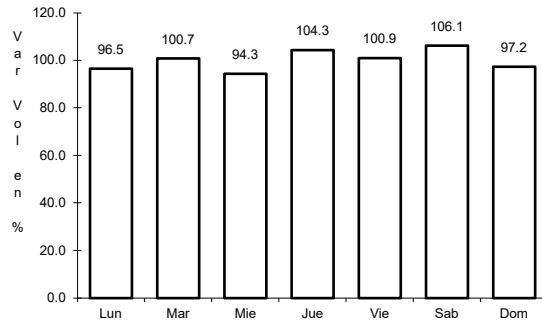


Km: 31.79 Tipo: 3 Sent: 0

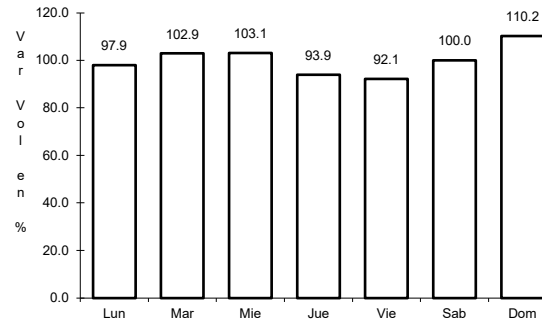
14 CARR: Ent. Tulancingo - Venta Grande (Cuota)

CLAVE: 00026

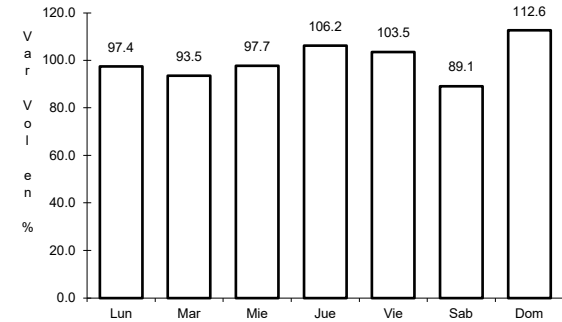
ruta: MEX-132D



Km: 92.20 Tipo: 1 Sent: 0



Km: 106.20 Tipo: 1 Sent: 0

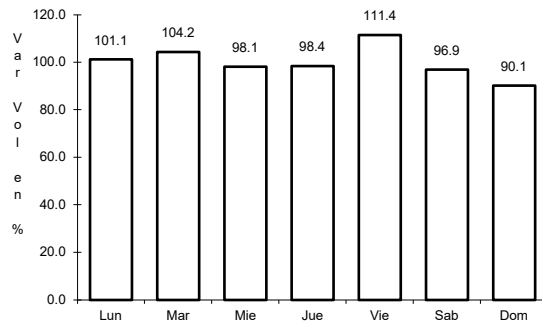


Km: 123.88 Tipo: 1 Sent: 0

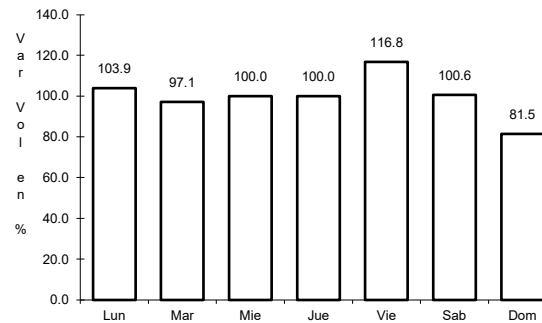
15 CARR: Libramiento Norte de la Ciudad de México (Cuota)

CLAVE: 0902

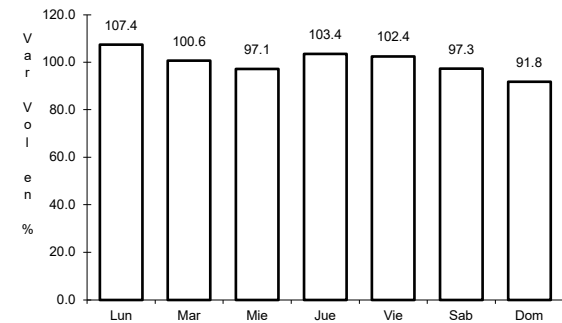
ruta: MEX-055D



Km: 12.90 Tipo: 1 Sent: 1



Km: 12.90 Tipo: 1 Sent: 2

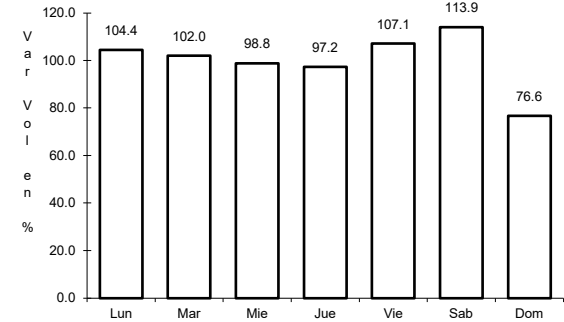
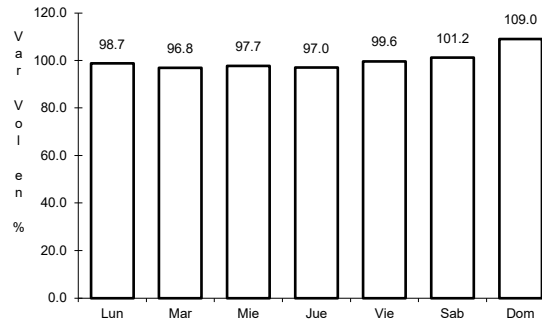
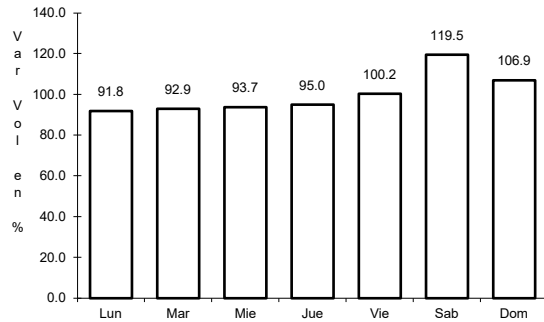


Km: 226.73 Tipo: 1 Sent: 1

16 CARR: México - Pachuca (Cuota)

CLAVE: 00432

ruta: MEX-085D



Km: 25.00

Tipo: 3

Sent: 1

Km: 25.00

Tipo: 3

Sent: 2

Km: 60.50

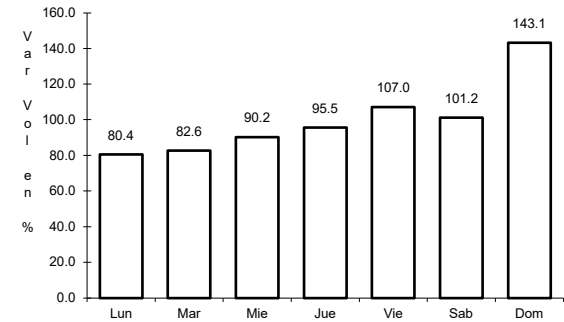
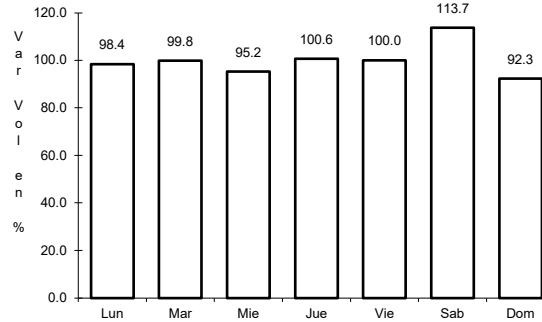
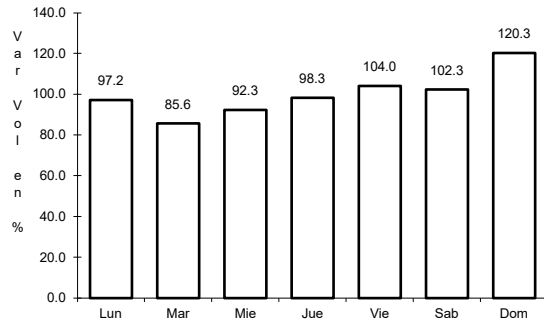
Tipo: 1

Sent: 1

17 CARR: Tejocotal - Nuevo Necaxa (Cuota)

CLAVE: 00211

ruta: MEX-132D



Km: 0.00

Tipo: 3

Sent: 0

Km: 17.00

Tipo: 1

Sent: 1

Km: 17.00

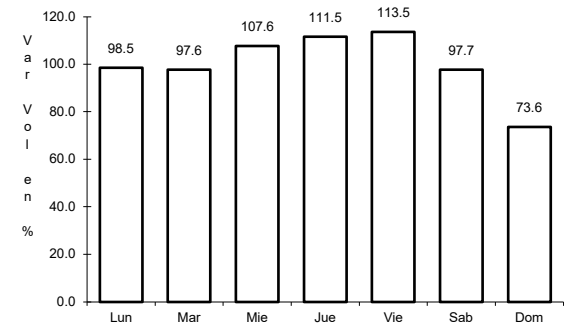
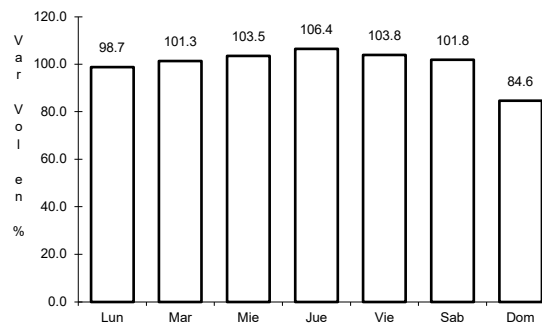
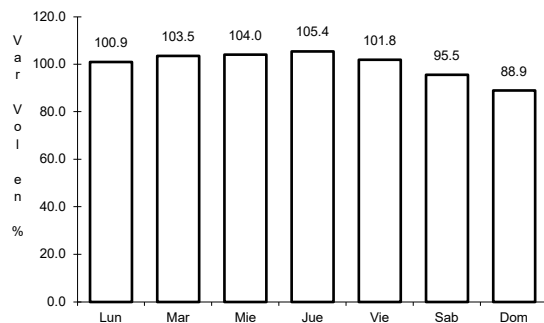
Tipo: 1

Sent: 2

18 CARR: México - Querétaro (Cuota)

CLAVE: 00411

ruta: MEX-057-MEX-057D



Km: 56.18

Tipo: 1

Sent: 1

Km: 56.18

Tipo: 1

Sent: 2

Km: 207.00

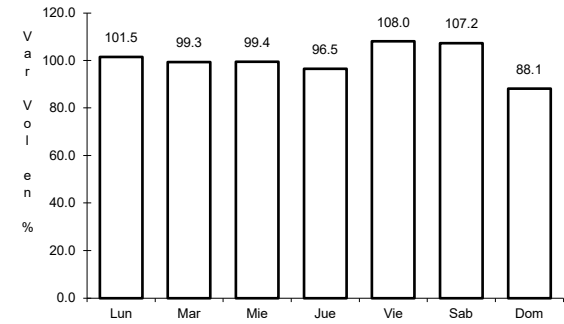
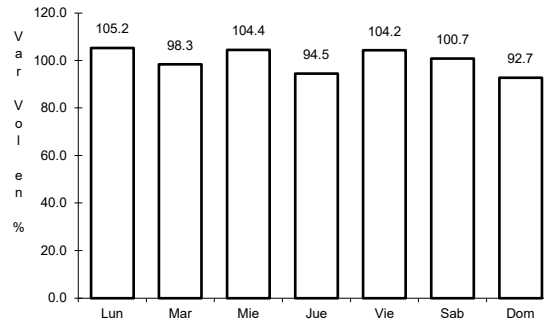
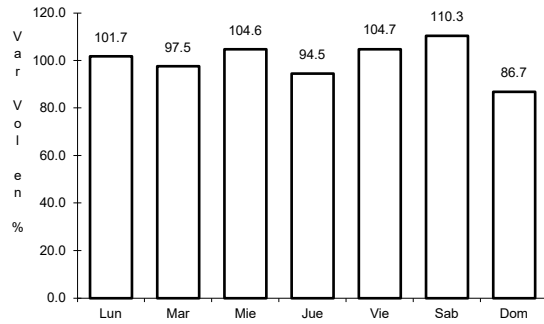
Tipo: 3

Sent: 1

19 CARR: Actopan - Progreso

CLAVE: 13038

ruta: HGO



Km: 0.00      Tipo: 3      Sent: 1

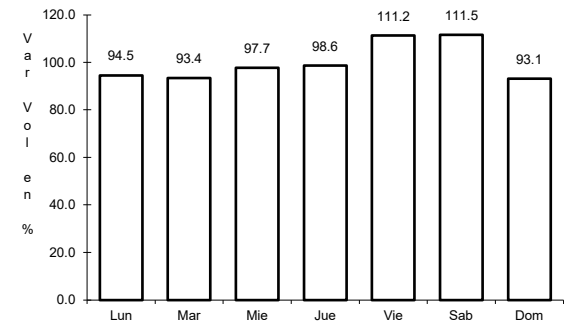
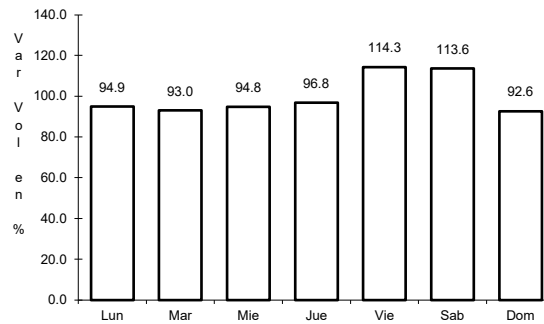
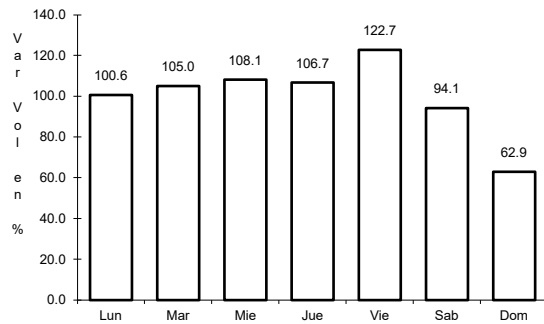
Km: 0.00      Tipo: 3      Sent: 2

Km: 23.90      Tipo: 1      Sent: 1

20 CARR: Cd. Sahagún - Ent. Emiliano Zapata

CLAVE: 13255

ruta: HGO



Km: 0.00      Tipo: 3      Sent: 2

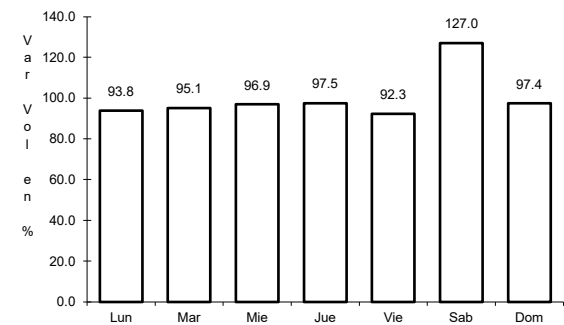
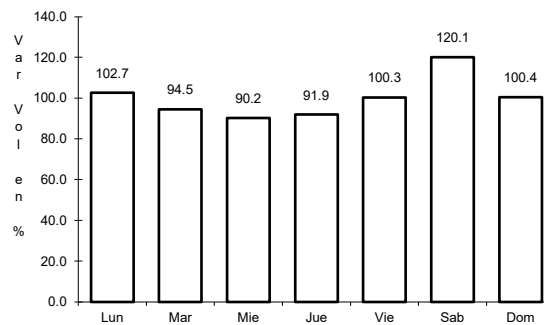
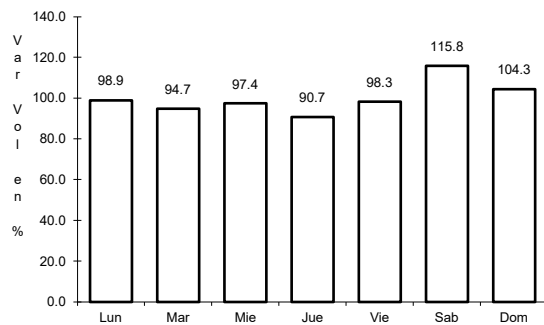
Km: 18.00      Tipo: 1      Sent: 1

Km: 18.00      Tipo: 1      Sent: 2

21 CARR: El Saucillo - Amealco

CLAVE: 13103

ruta: HGO-103



Km: 0.00      Tipo: 3      Sent: 0

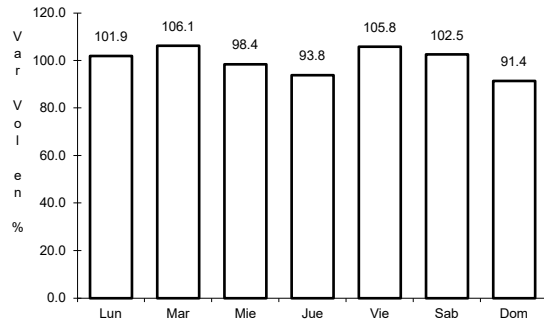
Km: 11.00      Tipo: 3      Sent: 0

Km: 21.40      Tipo: 1      Sent: 0

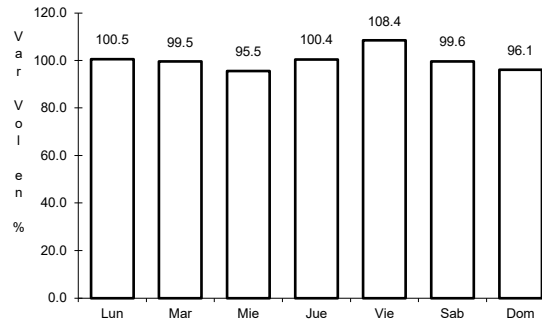
22 CARR: Ent. Tepeji del Río - Tlahuelilpan

CLAVE: 13017

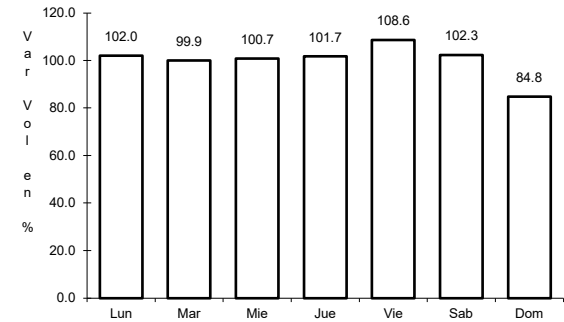
ruta: HGO-017



Km: 3.00 Tipo: 3 Sent: 1



Km: 3.00 Tipo: 3 Sent: 2

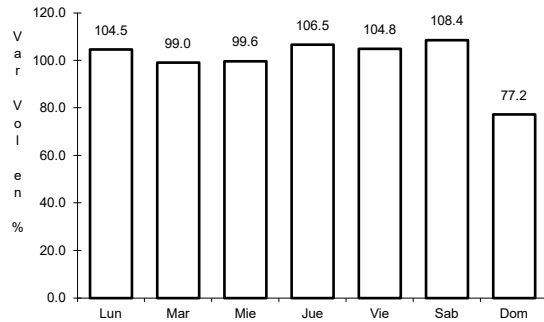


Km: 18.00 Tipo: 1 Sent: 0

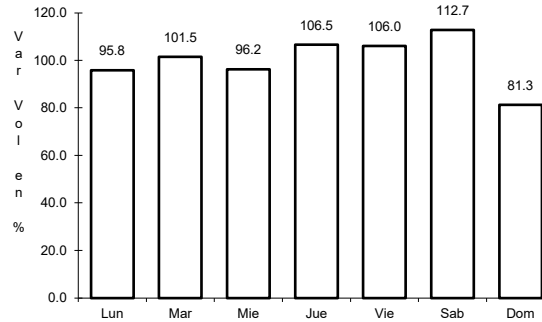
23 CARR: Ent. Tolman - Cd. Sahagún

CLAVE: 00119

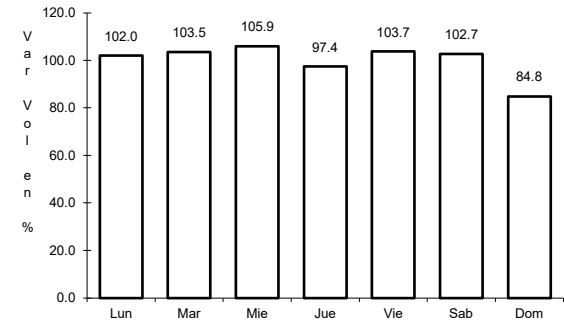
ruta: EM-009-HGO



Km: 0.00 Tipo: 3 Sent: 0



Km: 21.00 Tipo: 3 Sent: 0

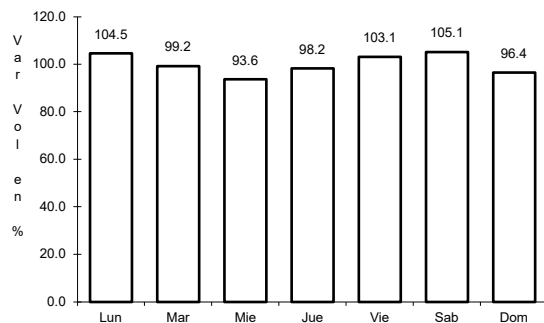


Km: 32.00 Tipo: 1 Sent: 0

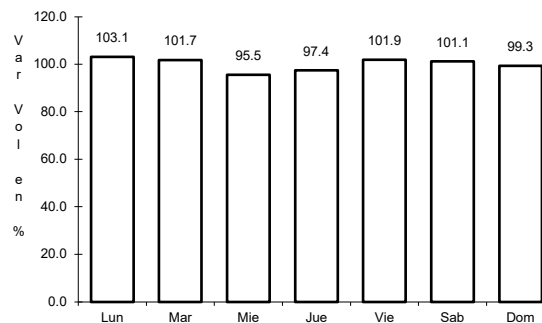
24 CARR: Francisco I. Madero - Tula de Allende

CLAVE: 13043

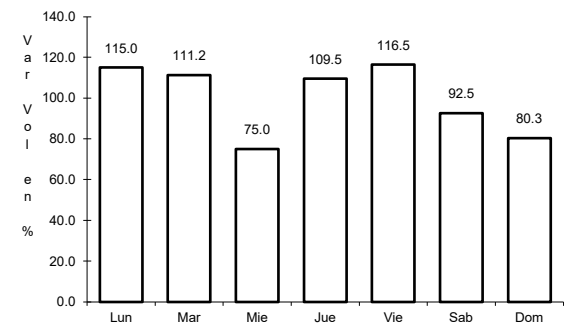
ruta: HGO



Km: 0.00 Tipo: 3 Sent: 0



Km: 38.20 Tipo: 1 Sent: 0

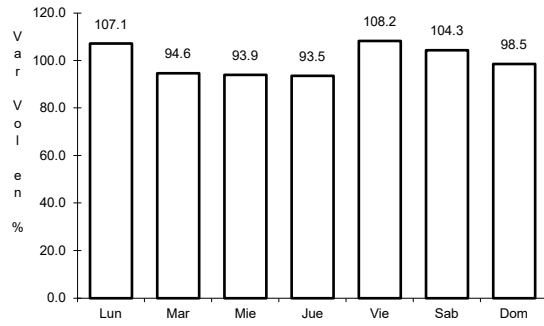


Km: 52.70 Tipo: 1 Sent: 0

25 CARR: Huichapan - Tecozautla

CLAVE: 13030

ruta: HGO-030



Km: 0.00

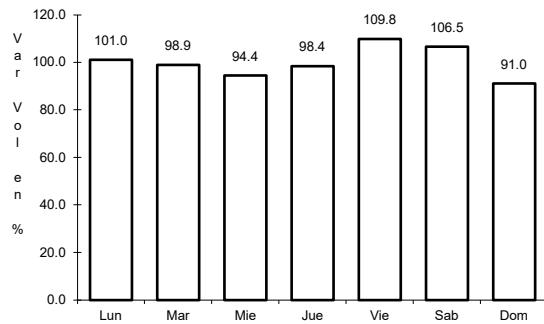
Tipo: 3

Sent: 0

26 CARR: Jilotepec - Maravillas

CLAVE: 00015

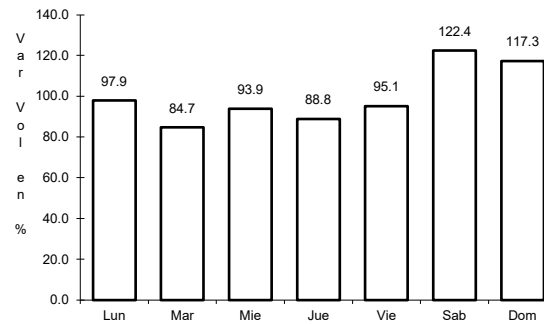
ruta: EM-HGO



Km: 0.00

Tipo: 3

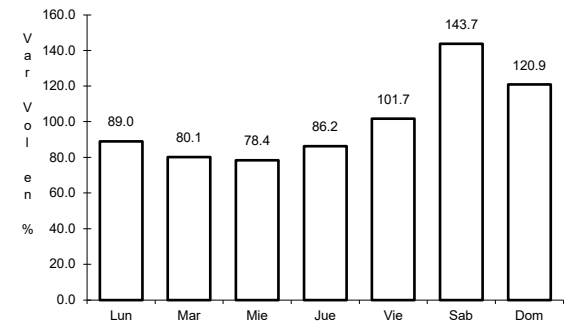
Sent: 0



Km: 21.30

Tipo: 1

Sent: 0



Km: 40.00

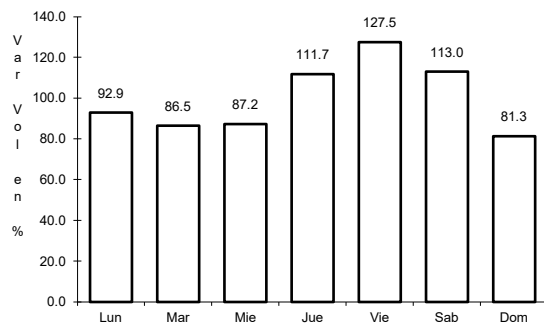
Tipo: 1

Sent: 0

27 CARR: Libramiento de Atotonilco El Grande

CLAVE: 13238

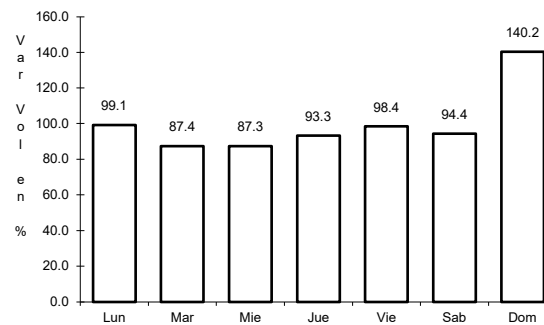
ruta: HGO



Km: 0.00

Tipo: 3

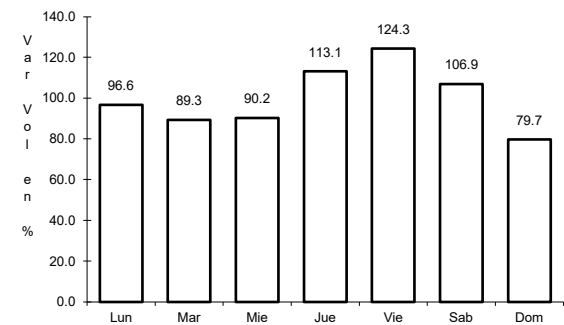
Sent: 1



Km: 0.00

Tipo: 3

Sent: 2



Km: 6.30

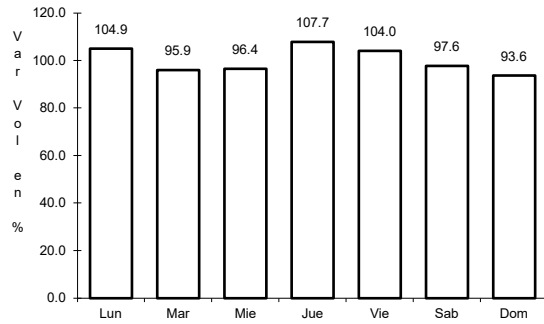
Tipo: 1

Sent: 1

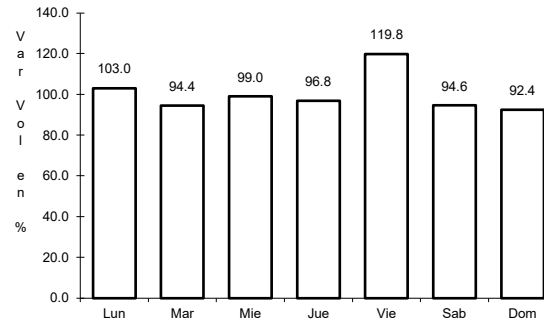
28 CARR: Lolotla - Atlapexco

CLAVE: 13238

ruta: HGO



Km: 0.00      Tipo: 3      Sent: 0

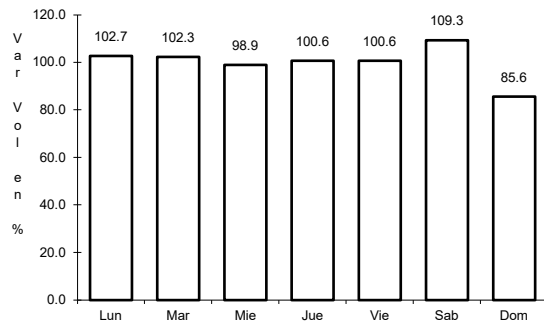


Km: 68.00      Tipo: 1      Sent: 0

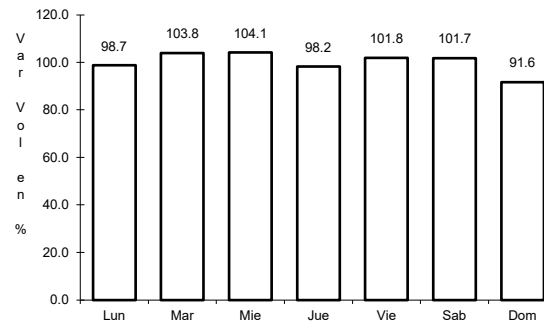
29 CARR: Los Reyes - El Tephé

CLAVE: 00021

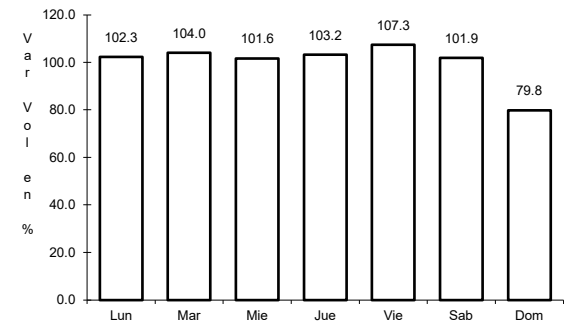
ruta: EM-HGO



Km: 1.35      Tipo: 3      Sent: 1



Km: 1.35      Tipo: 3      Sent: 2

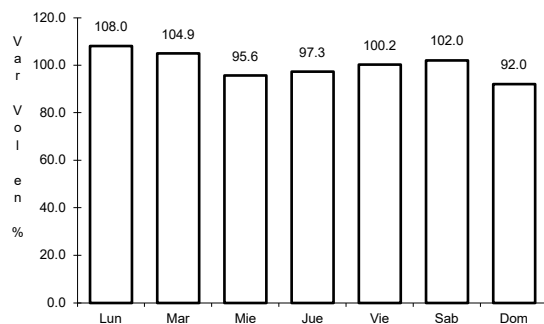


Km: 42.00      Tipo: 1      Sent: 0

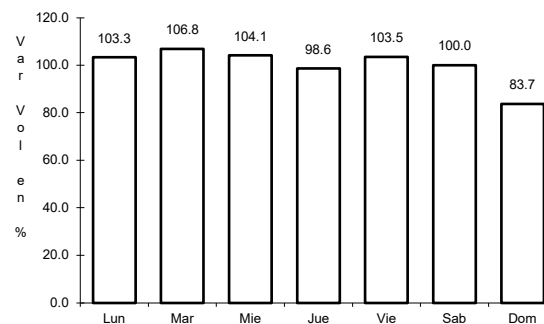
30 CARR: Otumba - Tizayuca

CLAVE: 00012

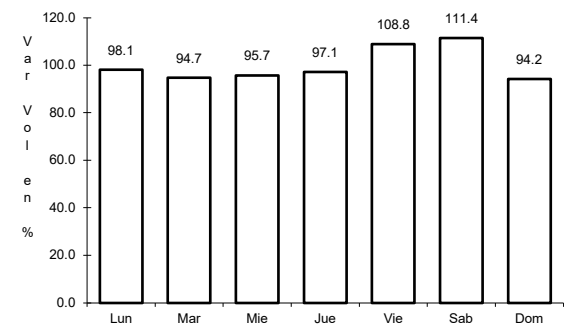
ruta: EM-HGO



Km: 0.00      Tipo: 3      Sent: 0



Km: 37.10      Tipo: 1      Sent: 1

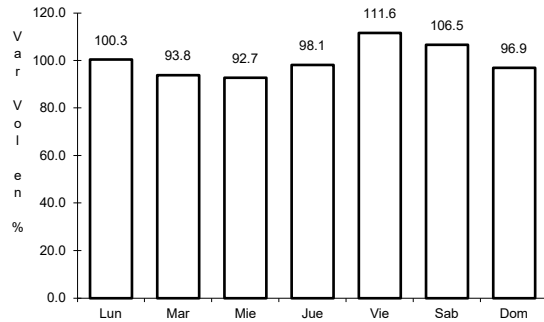


Km: 37.10      Tipo: 1      Sent: 2

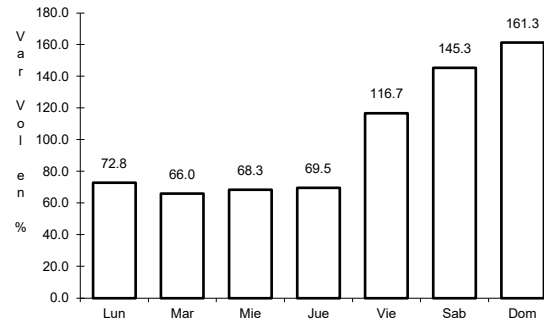
31 CARR: Ramal a El Chico

CLAVE: 13256

ruta: HGO



Km: 0.00      Tipo: 3      Sent: 0

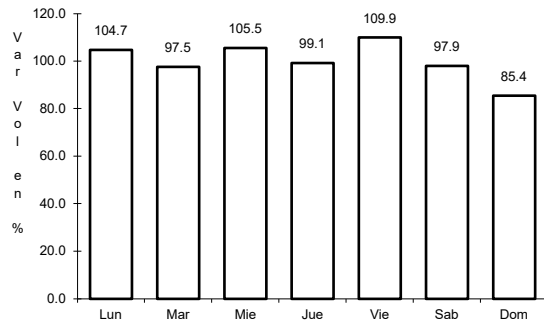


Km: 21.00      Tipo: 1      Sent: 0

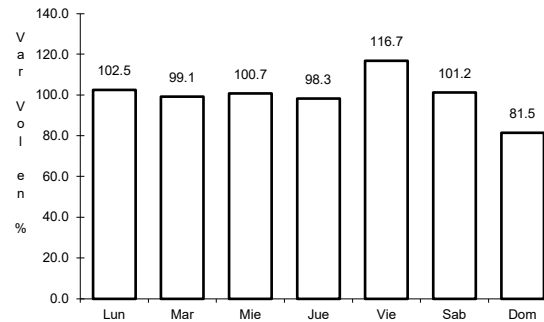
32 CARR: Ramal a Pachuca

CLAVE: 13254

ruta: HGO



Km: 0.00      Tipo: 3      Sent: 1

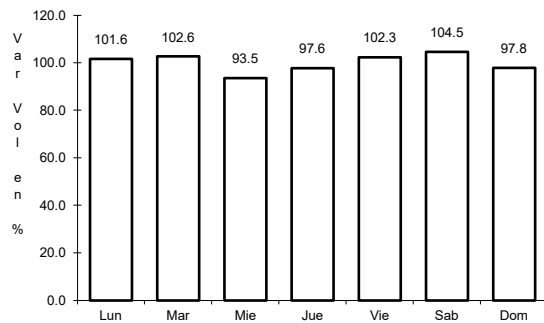


Km: 0.00      Tipo: 3      Sent: 2

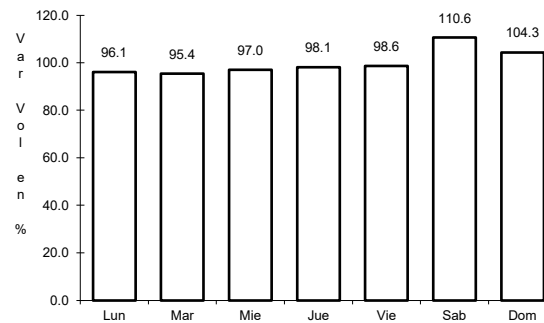
33 CARR: San Alejo - Huayacocotla

CLAVE: 00132

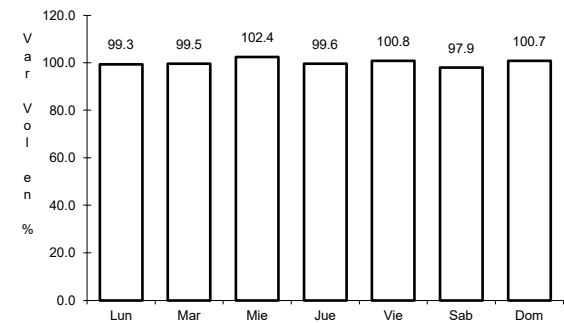
ruta: HGO-051-VER-113



Km: 0.00      Tipo: 3      Sent: 0



Km: 29.48      Tipo: 3      Sent: 0

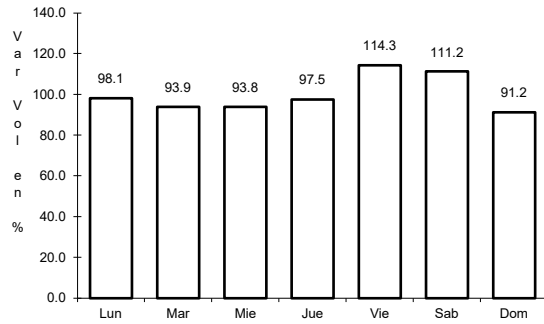


Km: 66.00      Tipo: 1      Sent: 0

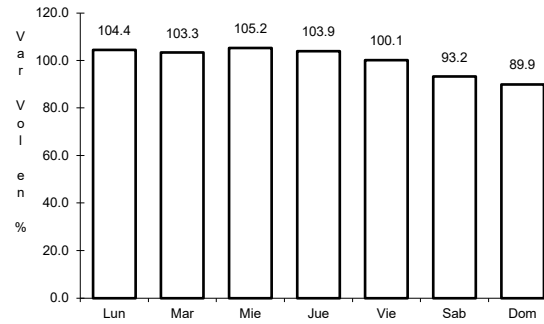
34 CARR: San Felipe Orizatlán - Huejutla de Reyes

CLAVE: 13258

ruta: HGO



Km: 0.00                      Tipo: 3                      Sent: 0

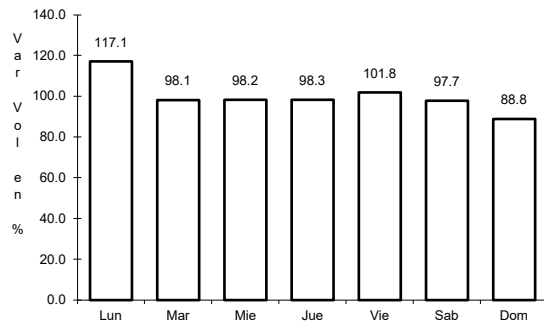


Km: 25.00                      Tipo: 1                      Sent: 0

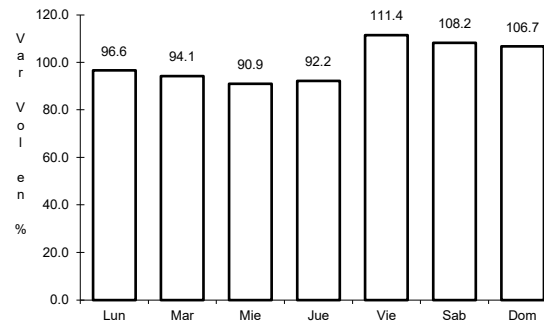
35 CARR: Santo Domingo - T. C. (México - Querétaro)

CLAVE: 00433

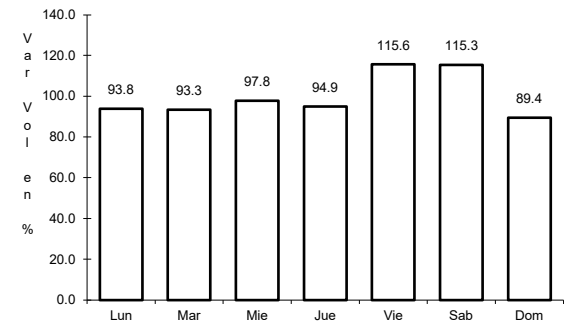
ruta: EM-011-HGO



Km: 0.00                      Tipo: 3                      Sent: 0



Km: 65.84                      Tipo: 1                      Sent: 1

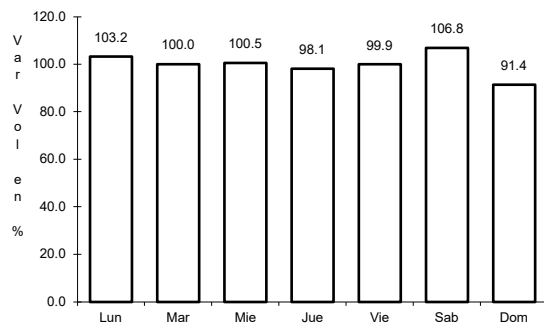


Km: 65.84                      Tipo: 1                      Sent: 2

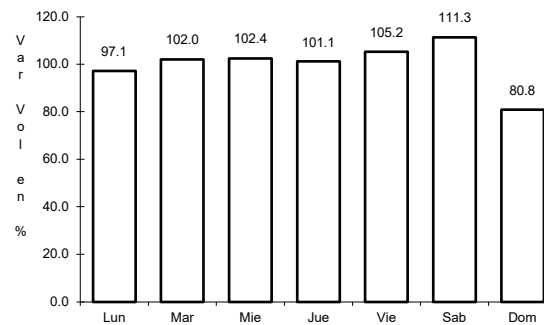
36 CARR: T. C. (Los Reyes - El Tephé) - Tizayuca

CLAVE: 00014

ruta: EM-HGO



Km: 0.00                      Tipo: 3                      Sent: 0

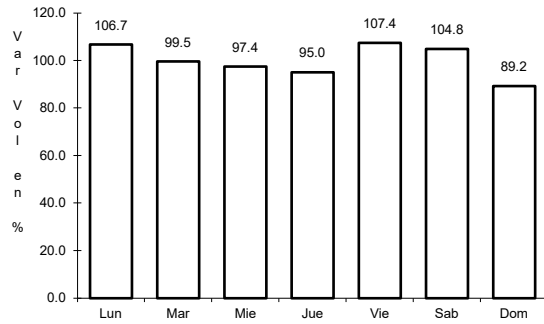


Km: 8.00                      Tipo: 1                      Sent: 0

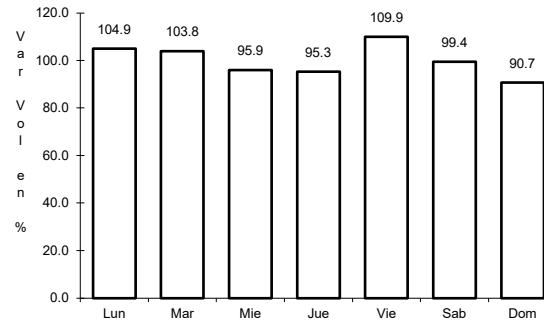
37 CARR: Tepeji del Río - T.C. (México - Querétaro)

CLAVE: 13104

ruta: HGO



Km: 0.00                      Tipo: 3                      Sent: 0

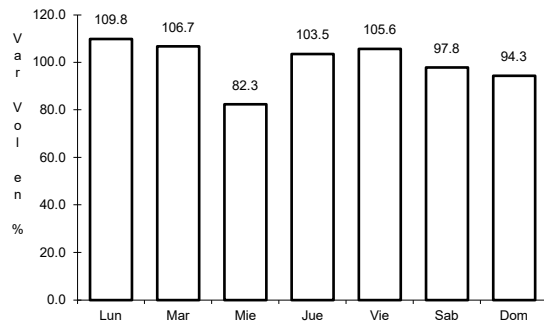


Km: 12.40                      Tipo: 1                      Sent: 0

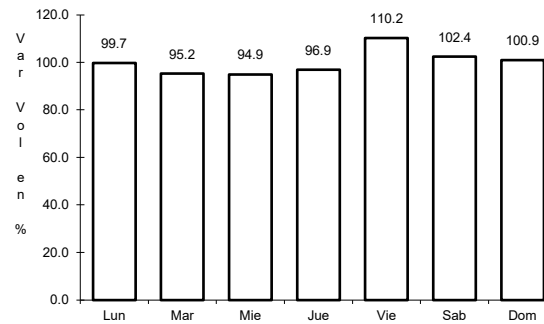
38 CARR: Tlahuelilpan - San Agustín Tlaxiaca

CLAVE: 13435

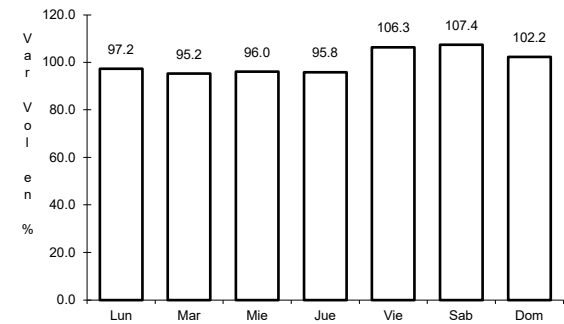
ruta: HGO



Km: 0.00                      Tipo: 3                      Sent: 0



Km: 25.50                      Tipo: 3                      Sent: 0

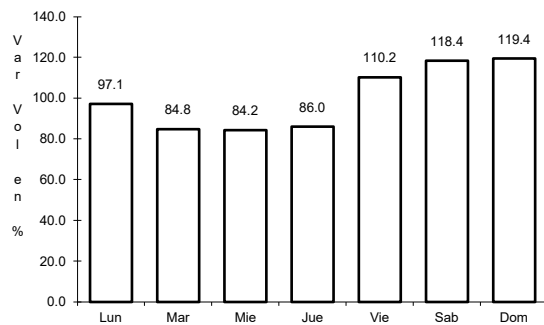


Km: 48.00                      Tipo: 1                      Sent: 0

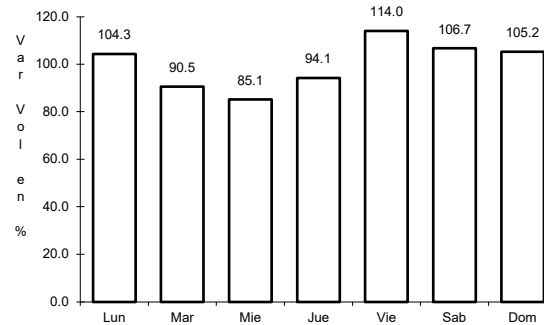
39 CARR: Tlaxco - Tejocotal (Cuota)

CLAVE: 00209

ruta: PUE-TLAX-HGO-D

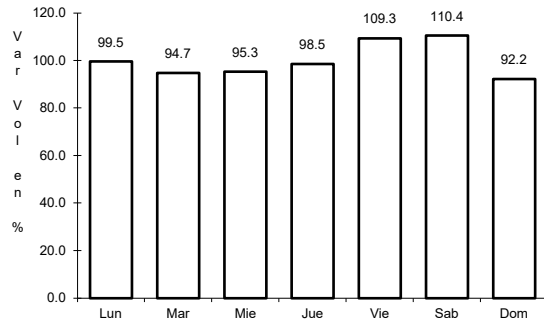


Km: 23.00                      Tipo: 3                      Sent: 0



Km: 56.20                      Tipo: 3                      Sent: 0

40 CARR: Calpulpan - El Ocote

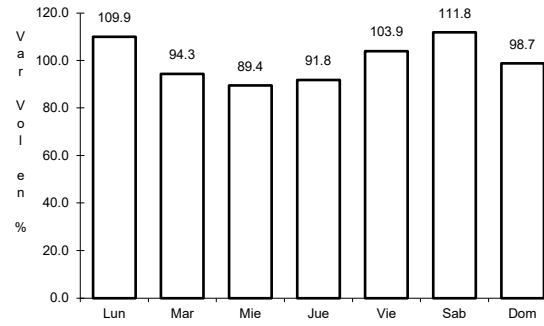


Km: 0.00

Tipo: 3

Sent: 0

CLAVE: 00054

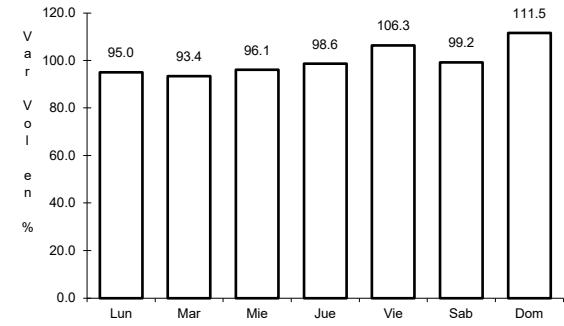


Km: 34.92

Tipo: 3

Sent: 0

RUTA: MEX-HGO



Km: 70.44

Tipo: 1

Sent: 1